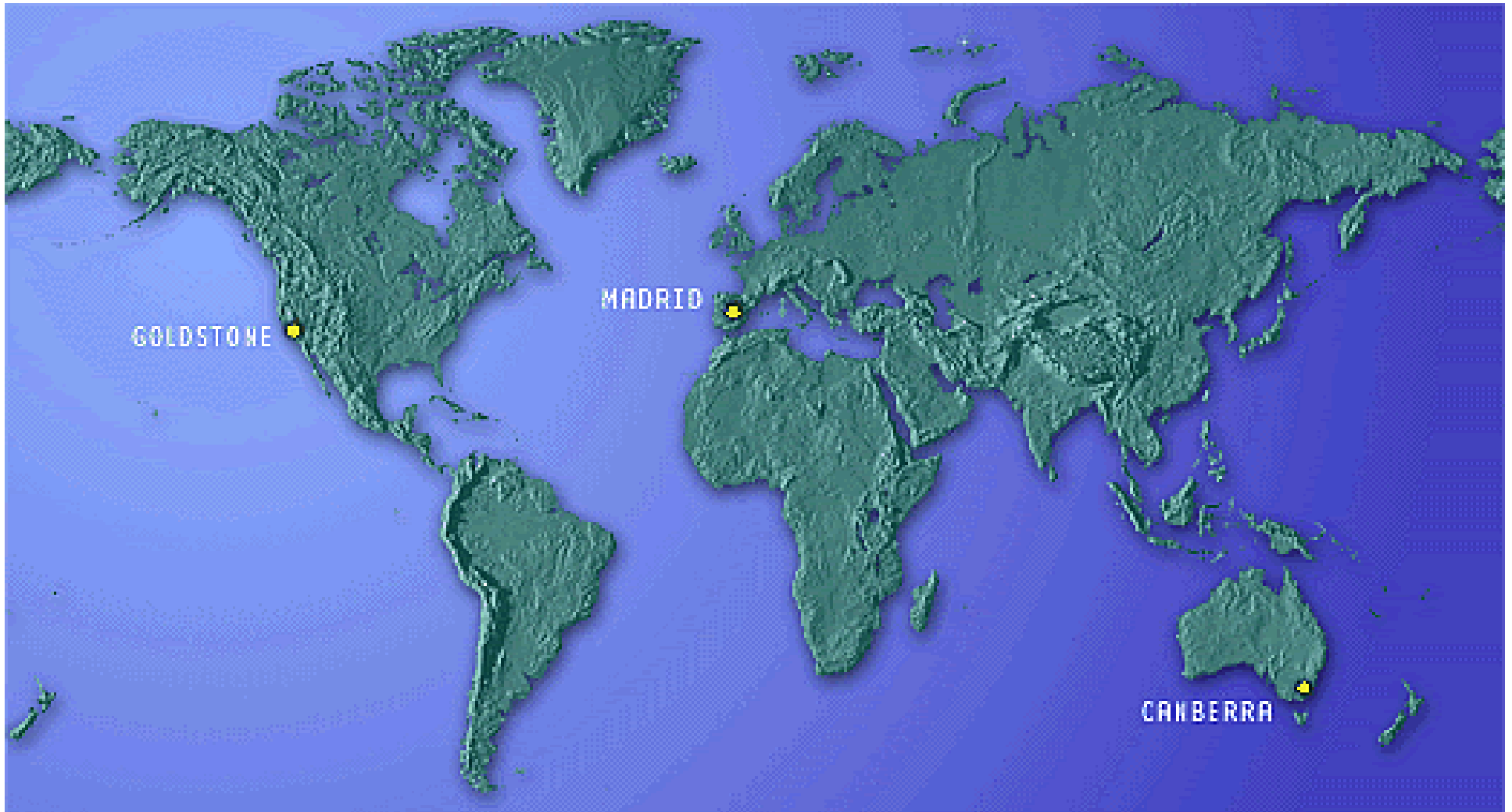


# DSN Antenna Downtime Status and Forecast



<http://rapweb.jpl.nasa.gov/planning>

# Antenna Downtime Status and Forecast

## Status

### Downtimes for September-December 2009

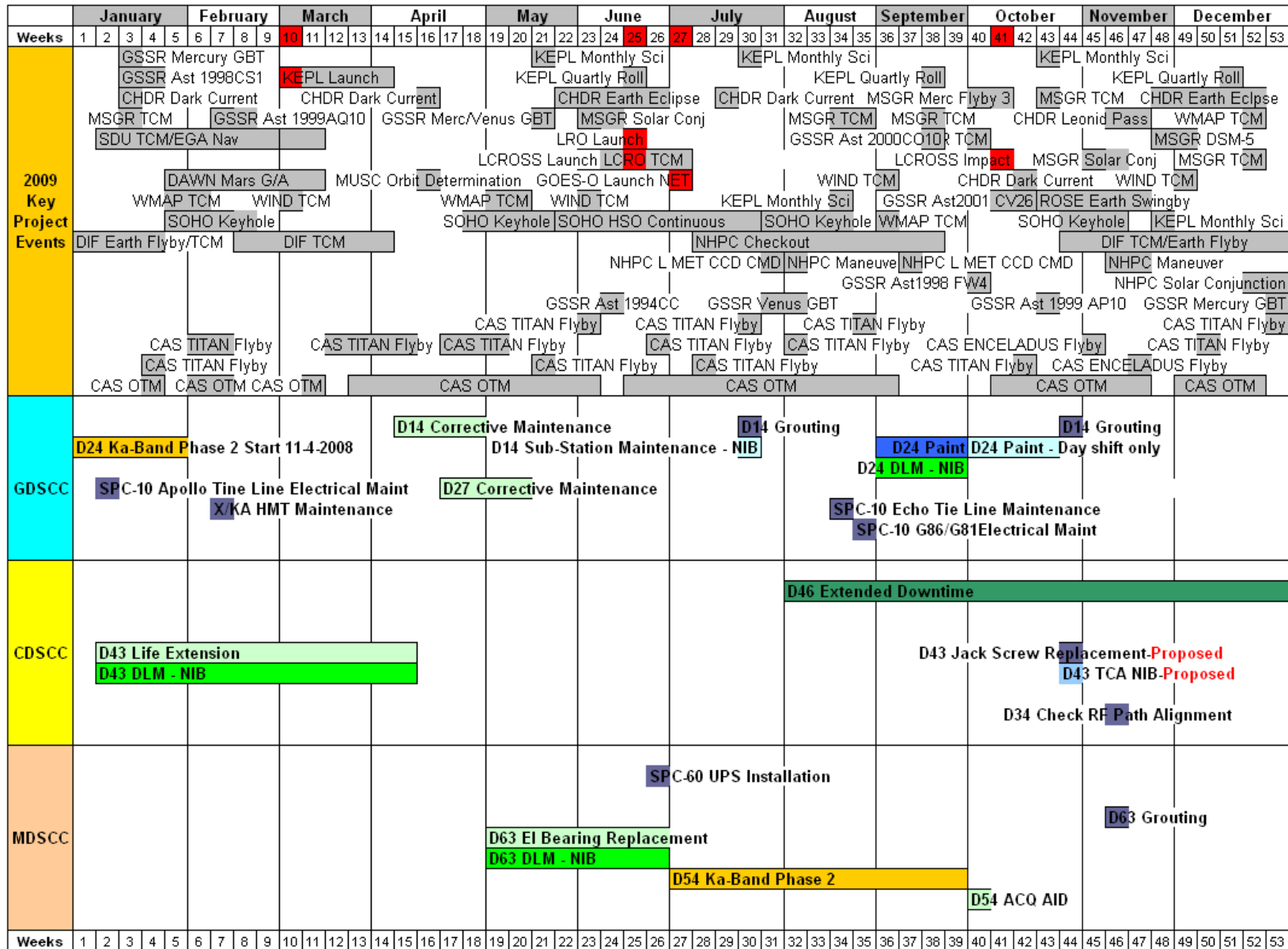
#### Christmas closure request

- ❑ GDSCC requests 359 0800-0800 - Local California time is 12:00am December 24 to 12:00am December 25
- ❑ CDSCC requests 358 0800-0800 - Local California time is 12:00 a.m. to 12:00 a.m. December 24 to December 25. Local Canberra time is 7:00 p.m. to 7:00 p.m. December 24 to December 25
- ❑ MDSCC requests 358 2100-2100 - Local California time is 1:00 p.m. to 1:00 p.m. December 24-December 25. Local Madrid time is 10:00 p.m. to 10:00 p.m. December 24-December 25

#### There will be no station closure over the New Year holiday

- ❑ DSS-54 Downtime for Ka-Band Phase 2 ends in week 39 (began in week 27)
- ❑ DSS-24 Painting scheduled for weeks 36-43
  - ❑ DLM will be NIB in weeks 36-39
- ❑ DSS-54 Downtime for ACQ AID Installation is scheduled for week 40
  - ❑ TERRA tracks have been scheduled for this time
- ❑ DSS-43 Downtime for Jackscrew Replacement proposed in week 44
  - ❑ Transmitter Controller Assembly (TCA) will be NIB
- ❑ DSS-34 Check Alignment of RF Path week 46
  - ❑ DOY 314, 0100 - 0100
- ❑ DSS-15 Pintle Bearing Maintenance in week 45-53
  - ❑ Gear Box Replacement will be NIB
  - ❑ Moved to weeks 2-10, in 2011. This is being done in order to give Antenna Mechanical Engineering, Operations Engineering and Goldstone O&M more time to concentrate on planning and getting ready for the critical upcoming DSS-14 DLM downtime.
- ❑ 70M Grouting
  - ❑ DSS-14 week 44
  - ❑ DSS-63 week 46

# Antenna Downtime Status and Forecast 2009



Revised: September 17, 2009

# Antenna Downtime Status and Forecast

## Status

### Downtimes for January-March 2010

- ❑ DSS-34 AZ Track Replacement, M1-5 Mirror Alignment and Support Ring Replacement will begin in week 03 as opposed to week 05 because more time is needed due to increased precision in resource planning
  - ❑ M1-5 Mirror Alignment will be NIB
  - ❑ Support Ring Adjustment will be NIB
  
- ❑ 70M Grouting
  - ❑ DSS-14 week 03
  - ❑ DSS-63 proposed in week 05 (NIB to Gearbox Strut Installation)
  
- ❑ DSS-63 Gearbox Strut Installation proposed in week 05
  - ❑ TCA will be NIB
  
- ❑ DSS-14 Life Extension begins in week 10, ends in week 40
  - ❑ DLM and Fall Arrest will be NIB

# Antenna Downtime Status and Forecast 2010

	January				February				March				April				May				June				July				August				September				October				November				December										
Weeks	1	2	3	4	5	6	7	8	9	10	11	12	13	14	15	16	17	18	19	20	21	22	23	24	25	26	27	28	29	30	31	32	33	34	35	36	37	38	39	40	41	42	43	44	45	46	47	48	49	50	51	52			
2010 Key Project Events	<p>WIND TCM (March 8, April 17, August 32)</p> <p>CHDR Lunar Eclipse (February 7), CHDR Earth Eclipse (May 20), CHDR Lunar Eclipse (July 28), CHDR Earth Eclipse/Leonid (September 28)</p> <p>CHDR Dark Current (January 3, March 10, April 13, May 23, June 25, July 27, August 30, September 27, October 20)</p> <p>DIF Earth Flyby (January 2), DIF TCM (January 3), DIF Approach/TCM (September 29), DIF Decommission (November 28)</p> <p>NHPC Maneuver (January 4, May 21, June 24, August 31, November 25)</p> <p>SDU DSM Nav (February 5), SDU DSM OD (September 26)</p> <p>KEPL Monthly Sci (January 5, March 11, May 18, June 22, August 29, October 6, November 13, December 11)</p> <p>KEPL Monthly Sci (January 6, March 12, May 19, June 23, August 30, October 7, November 14, December 12)</p> <p>SOHO Keyhole (January 7, March 13, May 20, June 24, August 31, October 8, November 15, December 13)</p> <p>MUSC Orbit Determination (March 14), MUSC Re-entry (June 26)</p> <p>CAS TITAN Flyby (January 8, February 14, March 21, April 18, May 25, June 22, July 29, August 26, September 23, October 20, November 17, December 14)</p> <p>CAS ENCELADUS Flyby (February 15, March 22, April 19, May 26, June 23, July 30, August 27, September 24, October 21, November 18, December 15)</p> <p>CAS OTM (January 9, February 16, March 23, April 20, May 27, June 24, July 31, August 28, September 25, October 22, November 19, December 16)</p> <p>VCO Launch (May 18), GSSR Ast 1999 MN (May 22), GSSR Venus GBT (August 33), GSSR Ast 1998U01 CHDR Earth Eclipse (September 30), WIND TCM (October 10), VCO VOI (December 17)</p> <p>WMAP TCM (April 14, August 34)</p> <p>ROSE Asteroid Lutetia Flyby (May 24)</p> <p>GSSR Mercury GBT (August 31)</p> <p>GOES-P Launch NET (September 17)</p> <p>DIF Encounter (November 10)</p> <p>NHPC Solar Conjunction (November 20)</p> <p>SOHO/SDO Continuous (May 20 - June 24)</p> <p>GSSR Ast 2002 VE68 (November 18)</p> <p>GSSR Ast 2003 UV11 (October 21)</p>																																																						
	GDSCC	<p>D14 Grouting (January 2)</p> <p>14-hour DPS Maint - Proposed (January 3, February 5, March 12, April 19, May 26, June 23, July 30, August 27, September 24, October 21, November 18, December 15)</p> <p>14-hour DPS Maint - Proposed (January 10, February 17, March 24, April 30, May 27, June 24, July 31, August 28, September 25, October 22, November 19, December 16)</p> <p>D14 Life Extension (March 14 - June 24)</p> <p>D14 DLM - NIB (March 14 - June 24)</p> <p>D14 Fall Arrest - NIB (March 14 - June 24)</p> <p>D25 Ka U/L (November 18)</p> <p>D25 DLM - NIB (November 18)</p> <p>D25 BWG APCA - NIB (November 18)</p> <p>SPC-10 Power upgrade-Proposed (August 31)</p>																																																					
		CDSCC	<p>D34 AZ Track Replacement (January 10 - January 17)</p> <p>D34 M1-5 Mirror Alignment - NIB (January 10 - January 17)</p> <p>D34 M5 Support Ring Replacement - NIB (January 10 - January 17)</p> <p>SPC-40 Electrical Upgrade-Proposed (August 31)</p> <p>SPC-40 Electrical Upgrade-Proposed (September 7)</p> <p>SPC-40 Electrical Upgrade-Proposed (September 14)</p> <p>SPC-40 Electrical Upgrade-Proposed (September 21)</p>																																																				
			MDSCC	<p>D63 Gearbox Strut Installation - Proposed (February 5)</p> <p>D63 Grouting NIB-Proposed (February 5)</p> <p>D63 TCA NIB-Proposed (February 5)</p> <p>SPC-60 DPS Power upgrade-Proposed (July 30)</p> <p>SPC-60 DPS Power upgrade-Proposed (August 6)</p> <p>D65 Life Extension Elevation (August 20 - August 27)</p>																																																			

Revised: September 16, 2009

# Antenna Downtime Status and Forecast

**DSN Resource Implementation Planning Matrix** by Subnet

Complex	Station	Subnet	S-Band		X-Band		Ka-Band		Ka Phase 2	X-Band ACQ AID
			Down	Up	Down	Up	Down	Up		
10	DSS-27	34HSB	✓	✓	N/A	N/A	N/A	N/A	N/A	N/A
10	DSS-24	34B1	✓	✓	✓	✓	N/A	N/A	TBD	✓
40	DSS-34	34B1	✓	✓	✓	✓	✓	N/A	TBD	✓
60	DSS-54	34B1	✓	✓	✓	✓	✓	N/A	09/29/09	✓
10	DSS-25	34B2	N/A	N/A	✓	✓	✓	08/29/10	N/A	N/A
10	DSS-26	34B2	N/A	N/A	✓	✓	✓	N/A	N/A	N/A
60	DSS-55	34B2	N/A	N/A	✓	✓	✓	N/A	N/A	N/A
10	DSS-15	34HEF	✓	N/A	✓	✓	N/A	N/A	N/A	N/A
40	DSS-45	34HEF	✓	✓	✓	✓	N/A	N/A	N/A	N/A
60	DSS-65	34HEF	✓	✓	✓	✓	N/A	N/A	N/A	N/A
10	DSS-14	70M	✓	✓	✓	✓	N/A	N/A	N/A	N/A
40	DSS-43	70M	✓	✓	✓	✓	N/A	N/A	N/A	N/A
60	DSS-63	70M	✓	✓	✓	✓	N/A	N/A	N/A	N/A

N/A = Capability Not Planned      xx/xx/xx = Capability Date Recently Changed      As of: 08/11/09  
 ✓✓✓ = Capability Recently Exists      ✓ = Capability Exists      \* = To Be Decommissioned