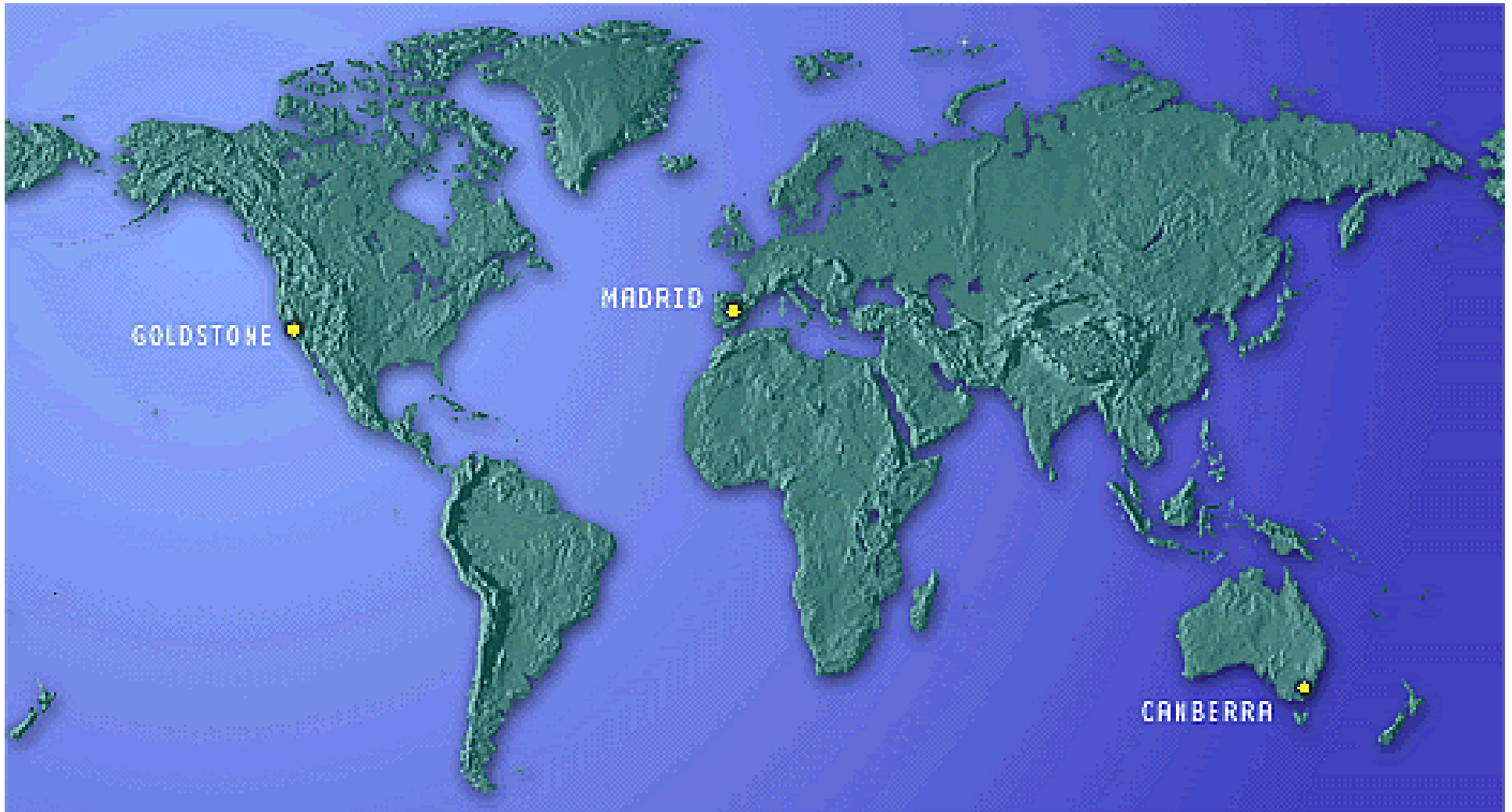
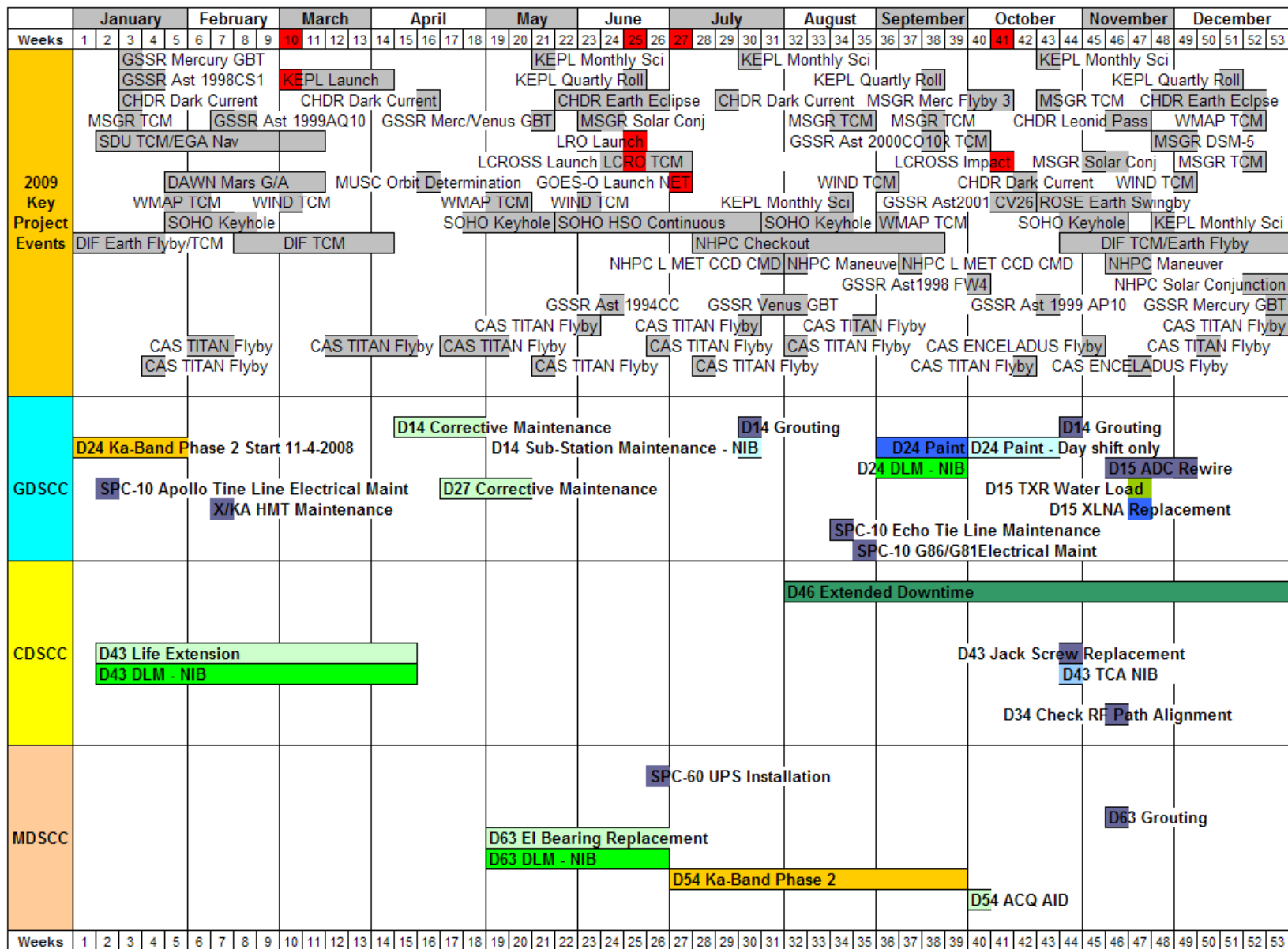


DSN Antenna Downtime Status and Forecast



<http://rapweb.jpl.nasa.gov/planning>

Antenna Downtime Status and Forecast 2009



Revised: October 29, 2009

Antenna Downtime Status and Forecast

The following are downtimes for 2009 and 2010

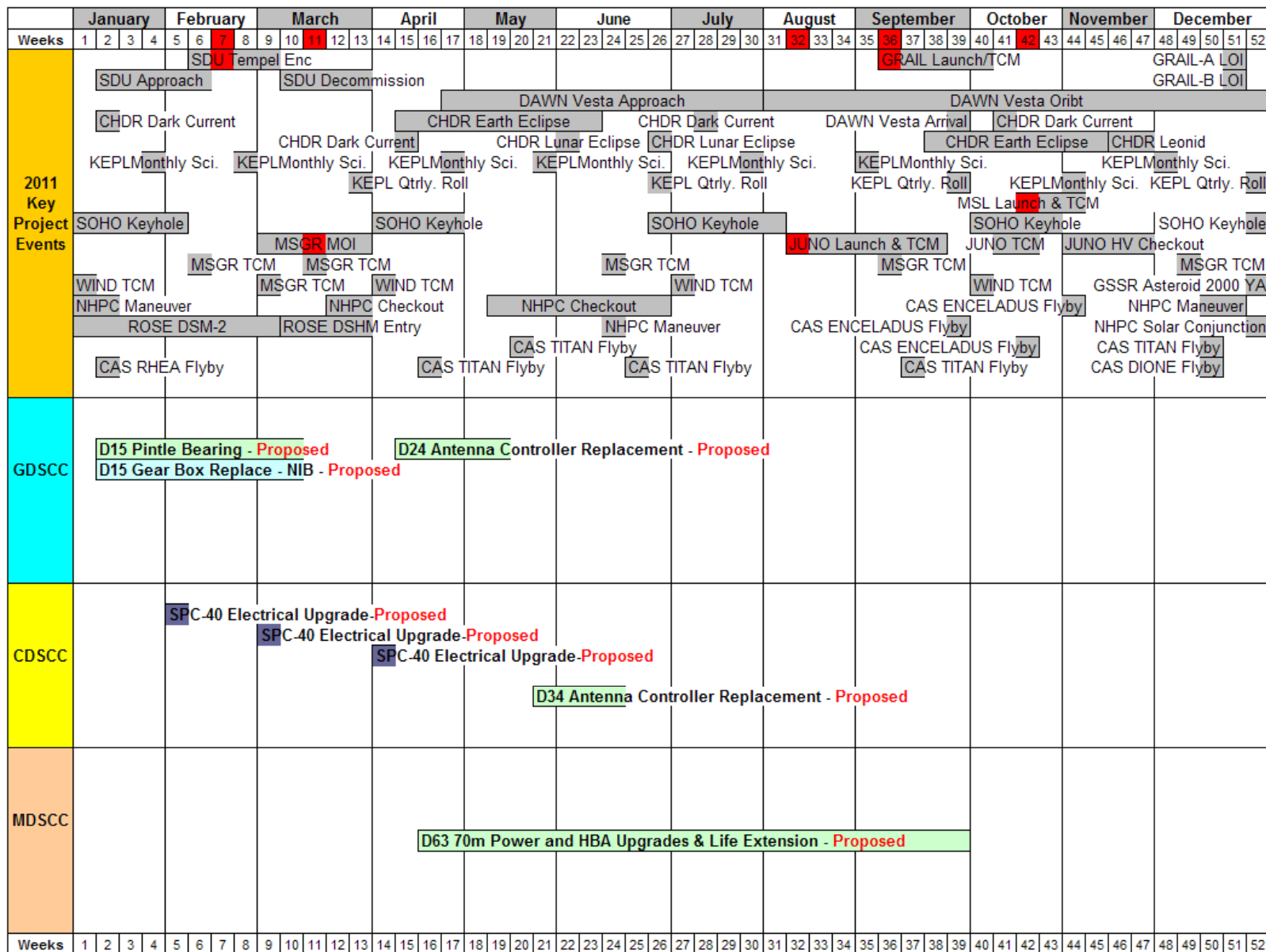
- ❑ DSS-63 is downtime for grouting is scheduled for November 10-16, 2009, weeks 46 and 47.
 - ❑ This was requested by a level 3 New Horizons hibernation track to start on Tuesday of week 46 and end on Monday of week 47.
 - ❑ All conflicts have been cleared
- ❑ Christmas closure request
 - ❑ GDSCC requests 359 0800-0800 – Stations completely closed are DSS-15, 25 & 26
 - ❑ CDSCC requests 358 0800-0800 – Station completely closed is DSS-43
 - ❑ MDSCC requests 358 2100-2100 – Stations completely closed are DSS-55 & -63
 - ❑ There will be no station closure over the New Year holiday
- ❑ DSS-34 downtime for Azimuth Track Replacement is scheduled January 27 through April 21, 2010, weeks 04 – 16.
- ❑ Time changed due to high level Cassini supports ending January 26
 - ❑ Additional time needed due to increased precision in resource planning
 - ❑ This also includes M1-5 Mirror Alignment and M5 Support Ring Replacement
- ❑ DSS-63 downtime for Gearbox Strut Installation is proposed for February 1 through February 6 2010, week 05
 - ❑ Downtime to complete the two lower gearbox struts, backup roller installation and install the tension struts.
 - ❑ Requesting Transmitter Controller Assembly (TCA) upgrade and grouting to run NIB to downtime
 - ❑ Start time is 0830 to allow a Cassini support
- ❑ SPC-10 downtime requested bi-monthly for 14 hour DSCC Power Substation (DPS) Maintenance in February and April 2010
 - ❑ February downtime schedule for week 06
 - ❑ April downtime is proposed for week 15
 - ❑ Beginning June 2010, 14 hour DPS Maintenance are requested monthly

Antenna Downtime Status and Forecast

The following are downtimes for 2009 and 2010 (cont'd)

- ❑ DSS-14 downtime for Life Extension and Depot Level Maintenance will start March 8, through October 10, 2010, weeks 10 – 40
 - ❑ This includes Big Runner Replacement and EI Bearing to eliminate grouting
 - ❑ Included is Fall Arrest downtime
- ❑ SPC-60 downtime requested for power upgrade May – July 2010 time frame
 - ❑ Request 2 sets of 3 consecutive 12-hour blocks of dayshift time
- ❑ DSS-65 downtime for Life Extension Elevation is scheduled for August 2 through October 3, 2010, weeks 31 – 39
 - ❑ All supports have been moved to other antenna during this downtime
 - ❑ This overlaps with DSS-14 Life Extension, but should not be a manpower problem
- ❑ SPC-40 downtime requested for Electrical Upgrade for 2010 & 2011
 - ❑ Request 12-hour complex downtime per occurrence, once per month
 - ❑ Requesting August, September, October and November 2010
 - ❑ Requesting February, March and April 2011
- ❑ DSS-25 downtime for Ka U/L is scheduled for November 8 through December 12, 2010 weeks 45 – 49
 - ❑ An additional week has been added to compensate for the holiday
 - ❑ Depot Level Maintenance will be scheduled during this downtime
 - ❑ APCA testing is also requested for this downtime

Antenna Downtime Status and Forecast 2011



Revised: October 29, 2009

Antenna Downtime Status and Forecast 2013

	January					February				March				April				May				June				July				August				September				October				November				December														
Weeks	1	2	3	4	5	6	7	8	9	10	11	12	13	14	15	16	17	18	19	20	21	22	23	24	25	26	27	28	29	30	31	32	33	34	35	36	37	38	39	40	41	42	43	44	45	46	47	48	49	50	51	52								
2013 Key Project Events	DAWN Ceres Coasting																																																											
	DAWN Ceres Thrst PB/TV																																																											
	CHDR Dark Current									CHDR Dark Current								CHDR Dark Current								CHDR Dark Current								CHDR Dark Current																										
						CHDR Earth Eclipse								CHDR Earth Eclipse								CHDR Earth Eclipse								CHDR Earth Eclipse																														
	JUNO Cruise										JUNO Cruise										JUNO Cruise										JUNO Cruise										JUNO EFB										JUNO Cruise									
											JUNO ME Flush										JUNO TCM																																							
	MRO MSL Relay																																																											
	MSL Surface Ops																																																											
	NHPC Solar Conjunction																				NHPC Checkout																																							
											NHPC DDOR										NHPC DDOR										NHPC Beacon																													
																				NHPC Maneuver																				JWST Operations																				
					CAS RHEA Flyby								CAS TITAN Flyby				CAS TITAN Flyby				CAS TITAN Flyby								CAS TITAN Flyby				CAS TITAN Flyby				CAS TITAN Flyby				CAS TITAN Flyby																			
CAS TITAN Flyby									CAS TITAN Flyby				CAS TITAN Flyby				CAS TITAN Flyby				CAS TITAN Flyby				CAS TITAN Flyby				CAS TITAN Flyby				CAS TITAN Flyby				CAS TITAN Flyby																							
GDSCC	D25 Az Track Replacement - Proposed																																																											
CDSCC	D43 Power and HBA Upgrades - Proposed																																																											
MDSCC	D54 ACR/AZ Track Replacement - Proposed																																																											
	D55 ACR/AZ Track Replacement - Proposed																																																											

Revised: October 29, 2009

Antenna Downtime Status and Forecast 2014

	January					February				March				April				May				June				July				August				September				October				November				December						
Weeks	1	2	3	4	5	6	7	8	9	10	11	12	13	14	15	16	17	18	19	20	21	22	23	24	25	26	27	28	29	30	31	32	33	34	35	36	37	38	39	40	41	42	43	44	45	46	47	48	49	50	51	52
2014 Key Project Events	CHDR Dark Current																							CHDR Earth Eclipse				CHDR Dark Current				JWST Launch				CHDR Dark Current				CHDR Earth Eclipse				MMS Launch & Early Orbit				DAWN Ceres Approach				
	DAWN Ceres Coastin																							DAWN Forced Coast				DAWN Ceres Coastin				DAWN Ceres ThrstPB				DAWN Ceres ThrstTV				DAWN Ceres Coastin				DAWN Ceres ThrstTV								
	DAWN Ceres Coastin																							MRO MSL Relay				MRO MSL Relay				MRO MSL Relay				MRO MSL Relay				MRO MSL Relay				MRO MSL Relay				MRO MSL Relay				
	MSL Surface Ops																							MSL Surface Ops				MSL Surface Ops				MSL Surface Ops				MSL Surface Ops				MSL Surface Ops				MSL Surface Ops								
	JUNO TCM																							JUNO TCM				JUNO TCM				JUNO TCM				JUNO TCM				JUNO TCM				JUNO TCM								
	JWST Operations																							JWST Operations				JWST Operations				JWST Operations				JWST Operations				JWST Operations				JWST Operations								
	CAS TITAN Flyby																							CAS TITAN Flyby				CAS TITAN Flyby				CAS TITAN Flyby				CAS TITAN Flyby				CAS TITAN Flyby				CAS TITAN Flyby				CAS TITAN Flyby				
	CAS TITAN Flyby																							CAS TITAN Flyby				CAS TITAN Flyby				CAS TITAN Flyby				CAS TITAN Flyby				CAS TITAN Flyby				CAS TITAN Flyby				CAS TITAN Flyby				
	CAS TITAN Flyby																							CAS TITAN Flyby				CAS TITAN Flyby				CAS TITAN Flyby				CAS TITAN Flyby				CAS TITAN Flyby				CAS TITAN Flyby				CAS TITAN Flyby				
	CAS TITAN Flyby																							CAS TITAN Flyby				CAS TITAN Flyby				CAS TITAN Flyby				CAS TITAN Flyby				CAS TITAN Flyby				CAS TITAN Flyby				CAS TITAN Flyby				
GDSCC	D26 AZ Track Replacement - Proposed																							D26 AZ Track Replacement - Proposed				D26 AZ Track Replacement - Proposed				D26 AZ Track Replacement - Proposed				D26 AZ Track Replacement - Proposed				D26 AZ Track Replacement - Proposed				D26 AZ Track Replacement - Proposed								
CDSCC																																																				
MDSCC																																																				

Revised: October 29, 2009

Antenna Downtime Status and Forecast

The following are downtimes for 2011 through 2013

- ❑ DSS-15 downtime for Pintle Bearing has been moved to 2011, proposed in weeks 2 – 9, January 10 through March 6.
 - ❑ DSS 15 Elevation Gearbox Replacement will be scheduled NIB during downtime
- ❑ As a result of the reduction of downtime for DSS-43 & DSS-63 in 2008 & 2009, it is requested to recover that time in 2011 and 2012, local spring, summer or fall after DSS-14 RTS.
 - ❑ DSS-63 is proposed for mid April through the end of September, 2011 weeks 16 – 39
 - ❑ DSS-43 is proposed for mid January through May of 2013, weeks 3 – 22
- ❑ BWG Antenna Controller Replacement is being requested starting in mid-April of 2011.
 - ❑ DSS-24 is proposed for April 11 to May 15, 2011 weeks 15 – 19
 - ❑ DSS-34 is proposed for May 23 through July 17 2011 weeks 21 – 24
 - ❑ DSS-27 is proposed to move to 2012
 - ❑ DSS-25 is proposed for October 10-30 2011 weeks 41 – 43 – This may move due to MSL Launch
 - ❑ DSS-26 is proposed for March 05 – 25, 2012 weeks 10 – 12
- ❑ AZ Track Replacement is needed for DSS-24, 54, 25, 26 and 55 starting in 2012 in the spring and fall. Propose the following sequence.
 - ❑ DSS-24 is proposed for September 3 through November 11, 2012, weeks 36 – 45
 - ❑ DSS-54 is proposed that this be scheduled for February 25 through June 09, 2013, weeks 09 – 23
 - ❑ This includes Antenna Controller Replacement task
 - ❑ DSS-55 is proposed for June 10 through September 22, 2013, weeks 24 – 38
 - ❑ This includes Antenna Controller Replacement task
 - ❑ DSS-25 is proposed for July 1 through November 10, 2013, weeks 36 – 45
 - ❑ DSS-26 is proposed for March 3 through May 4, 2014 weeks 10 – 18

Antenna Downtime Status and Forecast

DSN Resource Implementation Planning Matrix by Subnet

Complex	Station	Subnet	S-Band		X-Band		Ka-Band		Ka Phase 2	X-Band ACQ AID
			Down	Up	Down	Up	Down	Up		
10	DSS-27	34HSB	✓	✓	N/A	N/A	N/A	N/A	N/A	N/A
10	DSS-24	34B1	✓	✓	✓	✓	N/A	N/A	TBD	✓
40	DSS-34	34B1	✓	✓	✓	✓	✓	N/A	TBD	✓
60	DSS-54	34B1	✓	✓	✓	✓	✓	N/A	09/29/09	✓
10	DSS-25	34B2	N/A	N/A	✓	✓	✓	08/29/10	N/A	N/A
10	DSS-26	34B2	N/A	N/A	✓	✓	✓	N/A	N/A	N/A
60	DSS-55	34B2	N/A	N/A	✓	✓	✓	N/A	N/A	N/A
10	DSS-15	34HEF	✓	N/A	✓	✓	N/A	N/A	N/A	N/A
40	DSS-45	34HEF	✓	✓	✓	✓	N/A	N/A	N/A	N/A
60	DSS-65	34HEF	✓	✓	✓	✓	N/A	N/A	N/A	N/A
10	DSS-14	70M	✓	✓	✓	✓	N/A	N/A	N/A	N/A
40	DSS-43	70M	✓	✓	✓	✓	N/A	N/A	N/A	N/A
60	DSS-63	70M	✓	✓	✓	✓	N/A	N/A	N/A	N/A

N/A = Capability Not Planned

xx/xx/xx = Capability Date Recently Changed

As of: 11/02/09

✓✓✓ = Capability Recently Exists

✓ = Capability Exists

* = To Be Decommissioned