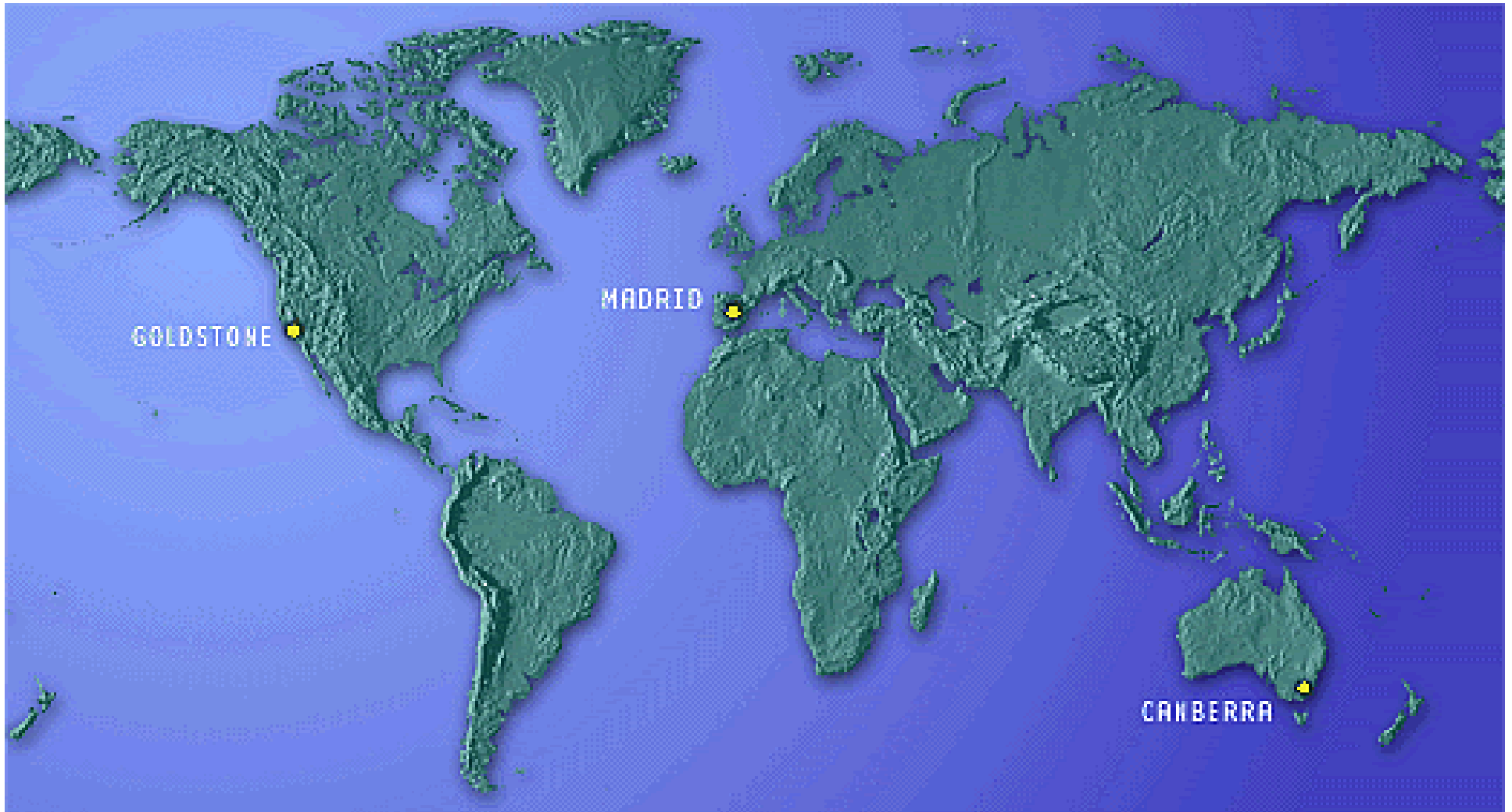
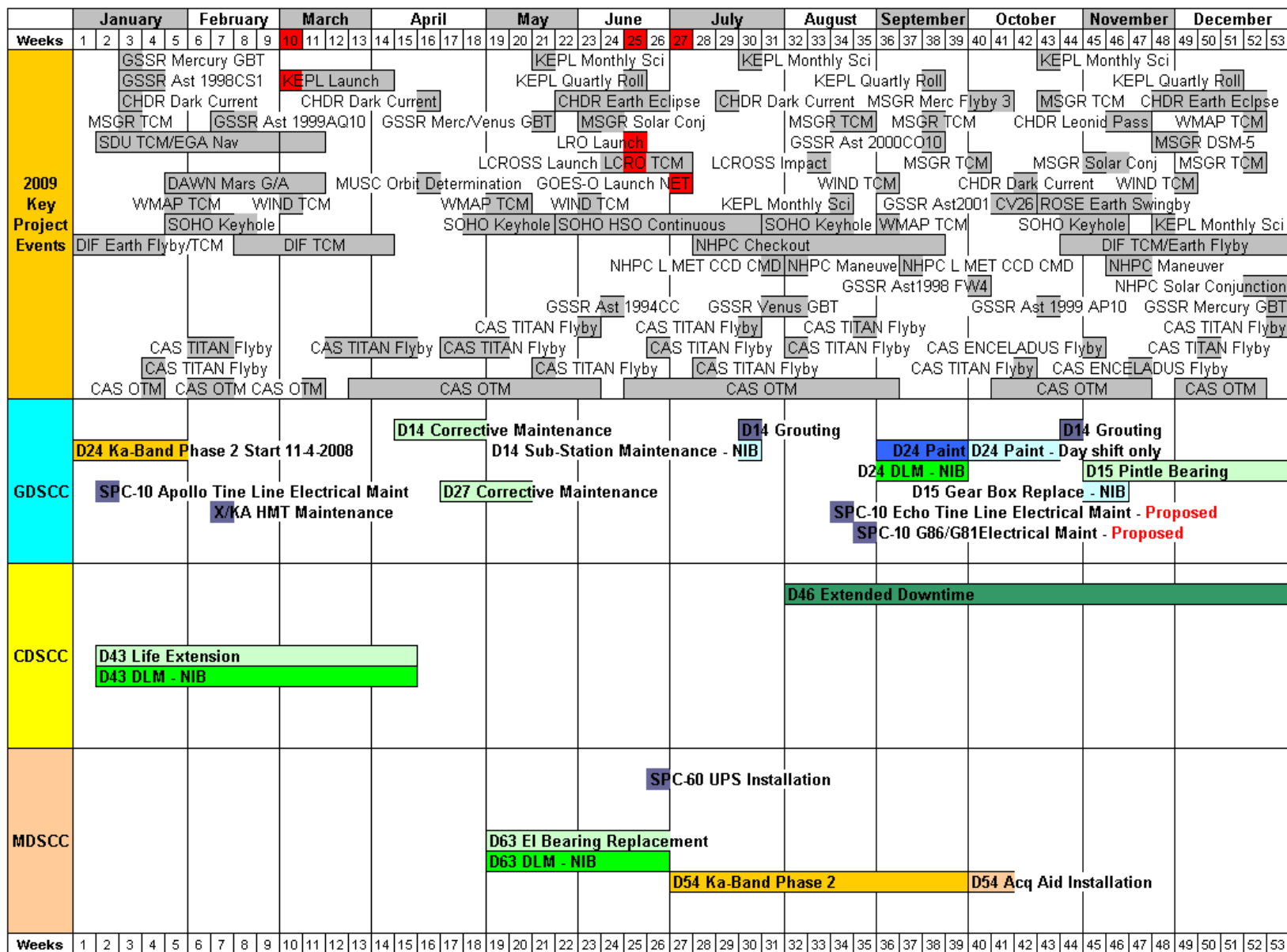


DSN Antenna Downtime Status and Forecast



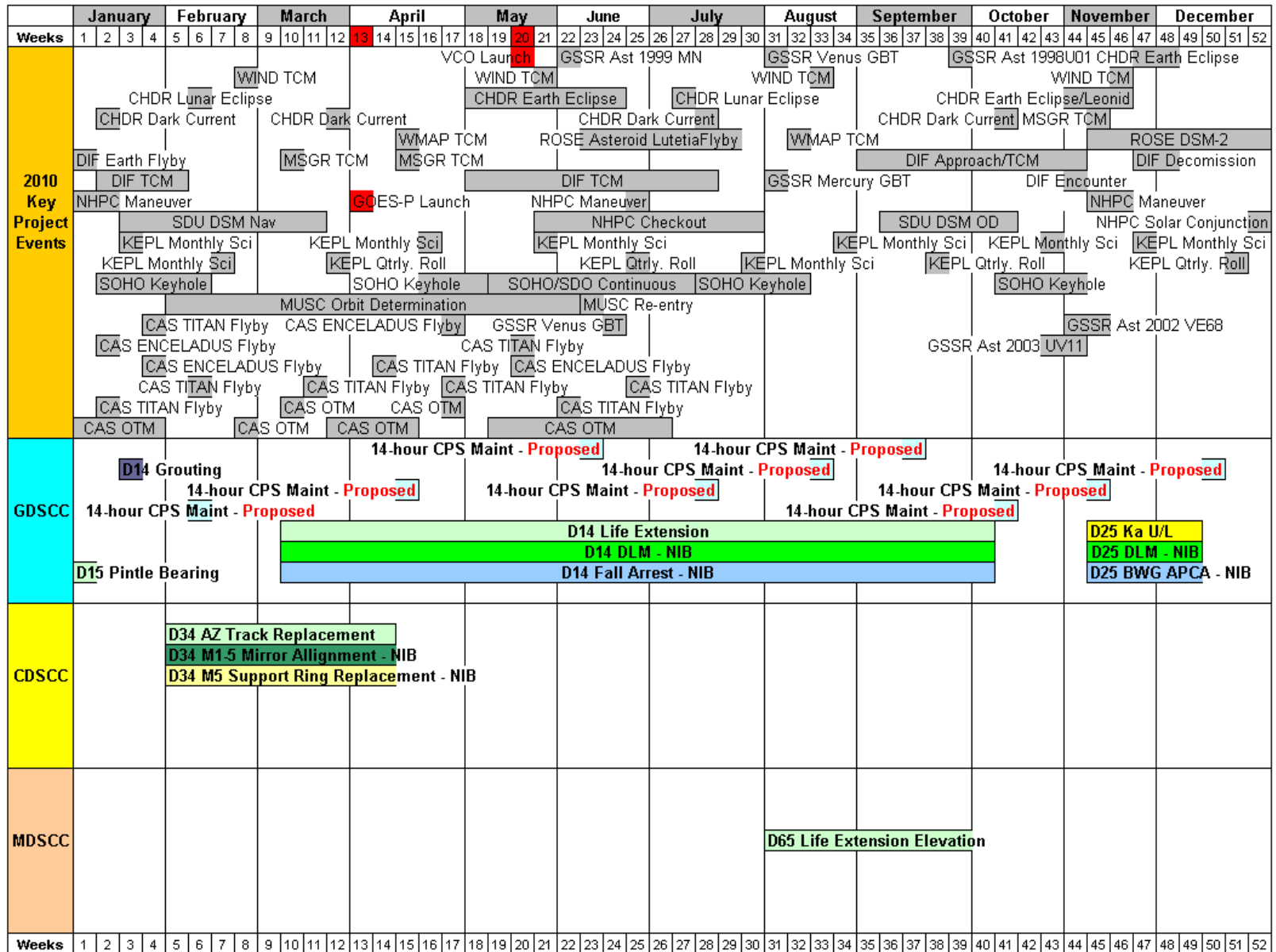
<http://rapweb.jpl.nasa.gov/planning>

Antenna Downtime Status and Forecast 2009



Revised: June 4, 2009

Antenna Downtime Status and Forecast 2010



Revised: June 4, 2009

Antenna Downtime Status and Forecast

The following are downtimes for 2009 and 2010

- ❑ DSS-63 downtime for EI Bearing Replacement and Depot Level Maintenance (including grouting) is scheduled for May 4 through June 28, 2009, weeks 19 - 26.
 - ❑ Downtime has been started
 - ❑ Additional time will be added to the 2011 downtime due to the reduced length of this downtime.
- ❑ SPC-60 downtime for UPS installation in preparation for DCD testing.
 - ❑ Requested 12 hours in the late June time frame prior to DCD testing starting in July.
 - ❑ Can do evenings but would prefer day shift Monday through Friday.
 - ❑ Downtime scheduled for DOY 174 1355 – 0355 week 26
- ❑ DSS-54 downtime for Ka-Band Phase 2 is scheduled for June 29 through September 27, 2009, weeks 27 – 39.
 - ❑ This downtime must end prior to the end of the fiscal year.
 - ❑ Requested time has been sent to MRSS to be integrated into schedule generation for weeks 30-39
- ❑ Complex preventative maintenance “Echo Tie-Line Electrical Maintenance” is being requested
 - ❑ Requesting time in week 34 DOY 229
 - ❑ Requested time has been sent to MRSS to be integrated into schedule generation
- ❑ Complex corrective maintenance “G86/G81 Transfer Switch Electrical Maintenance”
 - ❑ Requesting time in week 35 DOY 239
 - ❑ Requested time has been sent to MRSS to be integrated into schedule generation

Antenna Downtime Status and Forecast

The following are downtimes for 2009 and 2010 (cont'd)

- ❑ DSS-54 downtime for ACQ AID installation is scheduled for September 30-October 4 and October 7-11, 2009, weeks 40 & 41.
 - ❑ DSS-55 & -65 maintenance are scheduled for first 2 days of each week and station has agreed to work around these maintenance days.
 - ❑ Conflicts will be resolved at the conflict negotiation meeting. Request has been sent to MRSS for integrated schedule generation
 - ❑ Requested time has been sent to MRSS to be integrated into schedule generation
- ❑ DSS-14 Grouting is planned for July and October of 2009 weeks 30 & 44.
 - ❑ With the shift of the Life Extension and Depot Level Maintenance to 2010, 2 additional grouting periods will be needed in 2009
 - ❑ July grouting changed to 7 days DOY 201-207. There is no flexibility on this downtime
 - ❑ Still a few conflicts to be resolved at conflict negotiation meeting. Request has been sent to MRSS for integrated schedule generation
 - ❑ October 3-day grouting proposed for DOY 300-302 week 44
 - ❑ Requested time has been sent to MRSS to be integrated into schedule generation
- ❑ DSS-24 downtime for painting is scheduled August 31 through September 25, 2009, weeks 36 – 43
 - ❑ There will be complete 24/7 downtime for the first 4 weeks and dayshift downtime (1400-0200) for the remaining weeks.
 - ❑ Depot Level Maintenance will be scheduled the first 4 weeks of this downtime.
 - ❑ Request has been sent to MRSS for integrated schedule generation
- ❑ DSS-15 downtime for Pintle Bearing is scheduled for November 2, 2009 through January 10, 2010, weeks 45 - 01.
 - ❑ Downtime extended to compensate for the holidays.
 - ❑ DSS 15 Elevation Gearbox Replacement will be scheduled NIB during downtime
- ❑ DSS-34 downtime for Azimuth Track Replacement is scheduled February 1 through April 11, 2010, weeks 5 – 14.
 - ❑ This also includes M1-5 Mirror Alignment and M5 Support Ring Replacement.

Antenna Downtime Status and Forecast

The following are downtimes for 2009 through 2010

- ❑ DSS-14 downtime for Life Extension and Depot Level Maintenance will start March 8, through October 10, 2010, weeks 10-40
 - ❑ This includes Big Runner Replacement and EI Bearing to eliminate grouting
 - ❑ Included is Fall Arrest downtime
- ❑ DSS-65 downtime for Life Extension Elevation is scheduled for August 2 through October 3, 2010, weeks 31 - 39.
 - ❑ All supports have been moved to other antenna during this downtime.
 - ❑ This overlaps with DSS-14 Life Extension, but should not be a problem
- ❑ DSS-25 downtime for Ka U/L is scheduled for November 8 through December 12, 2010 weeks 45 – 49.
 - ❑ An additional week has been added to compensate for the holiday.
 - ❑ Depot Level Maintenance will be scheduled during this downtime.
 - ❑ APCA testing is also requested for this downtime

Antenna Downtime Proposed Moves 2011

	January				February				March				April				May				June				July				August				September				October				November				December															
Weeks	1	2	3	4	5	6	7	8	9	10	11	12	13	14	15	16	17	18	19	20	21	22	23	24	25	26	27	28	29	30	31	32	33	34	35	36	37	38	39	40	41	42	43	44	45	46	47	48	49	50	51	52								
2011 Key Project Events	SDU Approach				SDU Tempel Enc				SDU Decommission				DAWN Vesta Approach				DAWN Vesta Orbit				CHDR Dark Current				CHDR Earth Eclipse				CHDR Dark Current				DAWN Vesta Arrival				CHDR Dark Current				GRAIL-A LOI				GRAIL-B LOI															
	CHDR Dark Current				CHDR Dark Current				CHDR Lunar Eclipse				CHDR Lunar Eclipse				CHDR Lunar Eclipse				CHDR Earth Eclipse				CHDR Leonid				KEPL Monthly Sci.				KEPL Monthly Sci.				KEPL Monthly Sci.				KEPL Monthly Sci.																			
	KEPL Monthly Sci.				KEPL Monthly Sci.				KEPL Monthly Sci.				KEPL Monthly Sci.				KEPL Monthly Sci.				KEPL Monthly Sci.				KEPL Monthly Sci.				KEPL Monthly Sci.				KEPL Monthly Sci.				KEPL Monthly Sci.																							
	SOHO Keyhole				SOHO Keyhole				SOHO Keyhole				SOHO Keyhole				SOHO Keyhole				SOHO Keyhole				SOHO Keyhole				SOHO Keyhole				SOHO Keyhole				SOHO Keyhole																							
	MSGR MOI				MSGR TCM				MSGR TCM				MSGR TCM				MSGR TCM				MSGR TCM				MSGR TCM				MSGR TCM				MSGR TCM				MSGR TCM																							
	NHPC Maneuver				ROSE DSM-2				ROSE DSHM Entry				NHPC Checkout				NHPC Checkout				NHPC Maneuver				WIND TCM				WIND TCM				WIND TCM				WIND TCM																							
	WIND TCM				WIND TCM				WIND TCM				WIND TCM				WIND TCM				WIND TCM				WIND TCM				WIND TCM				WIND TCM				WIND TCM																							
	JUNO Launch & TCM				JUNO TCM				JUNO TCM				JUNO TCM				JUNO TCM				JUNO TCM				JUNO TCM				JUNO TCM				JUNO TCM				JUNO TCM																							
	MSL Launch & TCM				MSL Launch & TCM				MSL Launch & TCM				MSL Launch & TCM				MSL Launch & TCM				MSL Launch & TCM				MSL Launch & TCM				MSL Launch & TCM				MSL Launch & TCM				MSL Launch & TCM																							
	JUNO HV Checkout				JUNO HV Checkout				JUNO HV Checkout				JUNO HV Checkout				JUNO HV Checkout				JUNO HV Checkout				JUNO HV Checkout				JUNO HV Checkout				JUNO HV Checkout				JUNO HV Checkout																							
GDSCC																																																												
CDSCC	SPC40 Switch Gear - Proposed																																																											
MDSCC																																																												

Revised: June 4, 2009

Antenna Downtime Status and Forecast 2012

	January				February				March				April				May				June				July				August				September				October				November				December							
Weeks	1	2	3	4	5	6	7	8	9	10	11	12	13	14	15	16	17	18	19	20	21	22	23	24	25	26	27	28	29	30	31	32	33	34	35	36	37	38	39	40	41	42	43	44	45	46	47	48	49	50	51	52
2012 Key Project Events	DAWN Vesta Orbit														DAWN Vesta Depart				DAWN Ceres Thrust PB and TV																																	
	WIND TCM				GSSR Ast 2000 ET70				WIND TCM								WIND TCM				KEPL Qtrly. Roll				WIND TCM																											
					KEPL Monthly Sci.				KEPL Qtrly. Roll				KEPL Monthly Sci.				KEPL Qtrly. Roll				KEPL Monthly Sci.				KEPL Monthly Sci.				GSSR Ast 2007 PA8																							
					KEPL Monthly Sci.								KEPL Monthly Sci.												KEPL Monthly Sci.																											
					GSSR Ast Eros				JUNO DSMs DDOR								JUNO DSMs DDOR				JUNO DSMs/DDORs/TCMs				JUNO Per Maint																											
	JUNO Cruise																																																			
	CHDR Dark Current								CHDR Dark Current								CHDR Dark Current								CHDR Dark Current																											
					GSSR Mars				CHDR Earth Eclipse								GSSR Ast 2005 G021				CHDR Earth Eclipse								CHDR Leonid																							
	MRO Relay																																																			
	GRAIL A LOI/OPR/TSF												NHPC DDOR				NHPC DDOR												GSSR Ast 1998 ST49																							
	GRAIL B LOI/OPR/TSF																NHPC Maneuver				GSSR Ast 2002 AM31								GSSR Ast 4179 Tout																							
									GRAIL A/B Science																																											
									NHPC Beacon				NHPC Checkout												NHPC Beacon																											
	NHPC Solar Conjunction												MSL INST Checkout 2								MSL EDL/TCM								NHPC Solar Conjunction																							
													MSL FSW Update				MSL Approach																																			
					MSL TCM				MSL FS Checkout 2								MSL TCM								MSL Surface Ops																											
																								MRO MSL Relay																												
GDSCC											D26 Antenna Controller Replacement - Proposed																				D24 AZ Track Replacement - Proposed																					
CDSCC																								D34 Antenna Controller Replacement - Proposed																												
MDSCC																																																				

Revised: June 4, 2009

Antenna Downtime Status and Forecast 2013

	January					February				March				April				May				June				July				August				September				October				November				December						
Weeks	1	2	3	4	5	6	7	8	9	10	11	12	13	14	15	16	17	18	19	20	21	22	23	24	25	26	27	28	29	30	31	32	33	34	35	36	37	38	39	40	41	42	43	44	45	46	47	48	49	50	51	52
2013 Key Project Events	DAWN Ceres Coasting																																																			
	DAWN Ceres Thrst PB/TV																																																			
	CHDR Dark Current									CHDR Dark Current								CHDR Dark Current								CHDR Dark Current								CHDR Dark Current								CHDR Leonid										
						CHDR Earth Eclipse								CHDR Earth Eclipse								CHDR Earth Eclipse								CHDR Earth Eclipse								CHDR Earth Eclipse														
	JUNO Cruise																	JUNO Cruise																	JUNO EFB														JUNO Cruise			
																		JUNO ME Flush																	JUNO TCM																	
	MRO MSL Relay																																																			
	NHPC Solar Conjunction										NHPC Checkout																												NHPC Beacon													
	NHPC DDOR																		NHPC DDOR										NHPC Maneuver																							
	GDSCC																																					D25 Az Track Replacement - Proposed														
CDSCC						D43 70m Power and HBA Upgrades - Proposed																																														
MDSCC	D55 Antenna Controller Replacement - Proposed																		D54 AZ Track Replacement - Proposed																																	
						D54 Antenna Controller Replacement - Proposed																							D55 AZ Track Replacement - Proposed																							

Revised: June 4, 2009

Antenna Downtime Status and Forecast

The following are downtimes for 2011 through 2013

- ❑ As a result of the reduction of downtime for DSS-43 & DSS-63 in 2008 & 2009, it is requested to recover that time in 2011 and 2012, local spring, summer or fall after DSS-14 RTS.
 - ❑ DSS-63 is proposed for mid April through the end of September, 2011 weeks 16 – 39.
 - ❑ DSS-43 is proposed for January through May of 2012, weeks 3 – 20.
 - ❑ Due to high activities for GRAIL A and B science, there may be an overload on 34 meter antennas at CDSCC.
 - ❑ It is recommended that DSS-43 downtime be moved to 2013 weeks 5 – 22
 - ❑ Recommend to stay in 2012 schedule two 3-week downtimes, weeks 10-12 and 15-17 and remaining 12 weeks be scheduled in 2013

- ❑ BWG Antenna Controller Replacement is being requested starting in mid-April of 2011.
 - ❑ DSS-24 is proposed for May 2-29, 2011 weeks 18-21
 - ❑ DSS-27 is proposed for June 6-26, 2011 weeks 23-25
 - ❑ DSS-25 is proposed for October 10-30 2011 weeks 41-43
 - ❑ DSS-26 is proposed for March 5-25 2012 weeks 10-12
 - ❑ DSS-34 is proposed for June 11 through July 8 2012 weeks 24-27
 - ❑ DSS-54 is proposed for January 14 to February 10, 2013 weeks 3-6
 - ❑ DSS-54 is proposed for February 11 through March 3, 2013, weeks 7-9.

- ❑ AZ Track Replacement is needed for DSS-24, 54, 25, 26 and 55 starting in 2012 in the spring and fall. Propose the following sequence.
 - ❑ DSS-24 is proposed for September 3 through November 11, 2012, weeks 36-45
 - ❑ DSS-54 is proposed for April 1 through June 9, 2013, weeks 14-23.
 - ❑ DSS-55 is proposed for July 1 through September 8, 2013, weeks 27-36.
 - ❑ DSS-25 is proposed for September 2 through November 10, 2013, weeks 36-45.
 - ❑ DSS-26 is scheduled for March 3 through May 11, 2014 weeks 10-19.

Antenna Downtime Status and Forecast

DSN Resource Implementation Planning Matrix by Subnet

Complex	Station	Subnet	S-Band		X-Band		Ka-Band		Ka Phase 2
			Down	Up	Down	Up	Down	Up	
40	DSS-46	26M*	✓	✓	N/A	N/A	N/A	N/A	N/A
10	DSS-27	34HSB	✓	✓	N/A	N/A	N/A	N/A	N/A
10	DSS-24	34B1	✓	✓	✓	✓	N/A	N/A	TBD
40	DSS-34	34B1	✓	✓	✓	✓	✓	N/A	TBD
60	DSS-54	34B1	✓	✓	✓	✓	✓	N/A	09/27/09
10	DSS-25	34B2	N/A	N/A	✓	✓	✓	08/29/10	N/A
10	DSS-26	34B2	N/A	N/A	✓	✓	✓	N/A	N/A
60	DSS-55	34B2	N/A	N/A	✓	✓	✓	N/A	N/A
10	DSS-15	34HEF	✓	N/A	✓	✓	N/A	N/A	N/A
40	DSS-45	34HEF	✓	✓	✓	✓	N/A	N/A	N/A
60	DSS-65	34HEF	✓	✓	✓	✓	N/A	N/A	N/A
10	DSS-14	70M	✓	✓	✓	✓	N/A	N/A	N/A
40	DSS-43	70M	✓	✓	✓	✓	N/A	N/A	N/A
60	DSS-63	70M	✓	✓	✓	✓	N/A	N/A	N/A

N/A = Capability Not Planned xx/xx/xx = Capability Date Recently Changed As of: 03/02/09
 ✓✓✓ = Capability Recently Exists ✓ = Capability Exists * = To Be Decommissioned