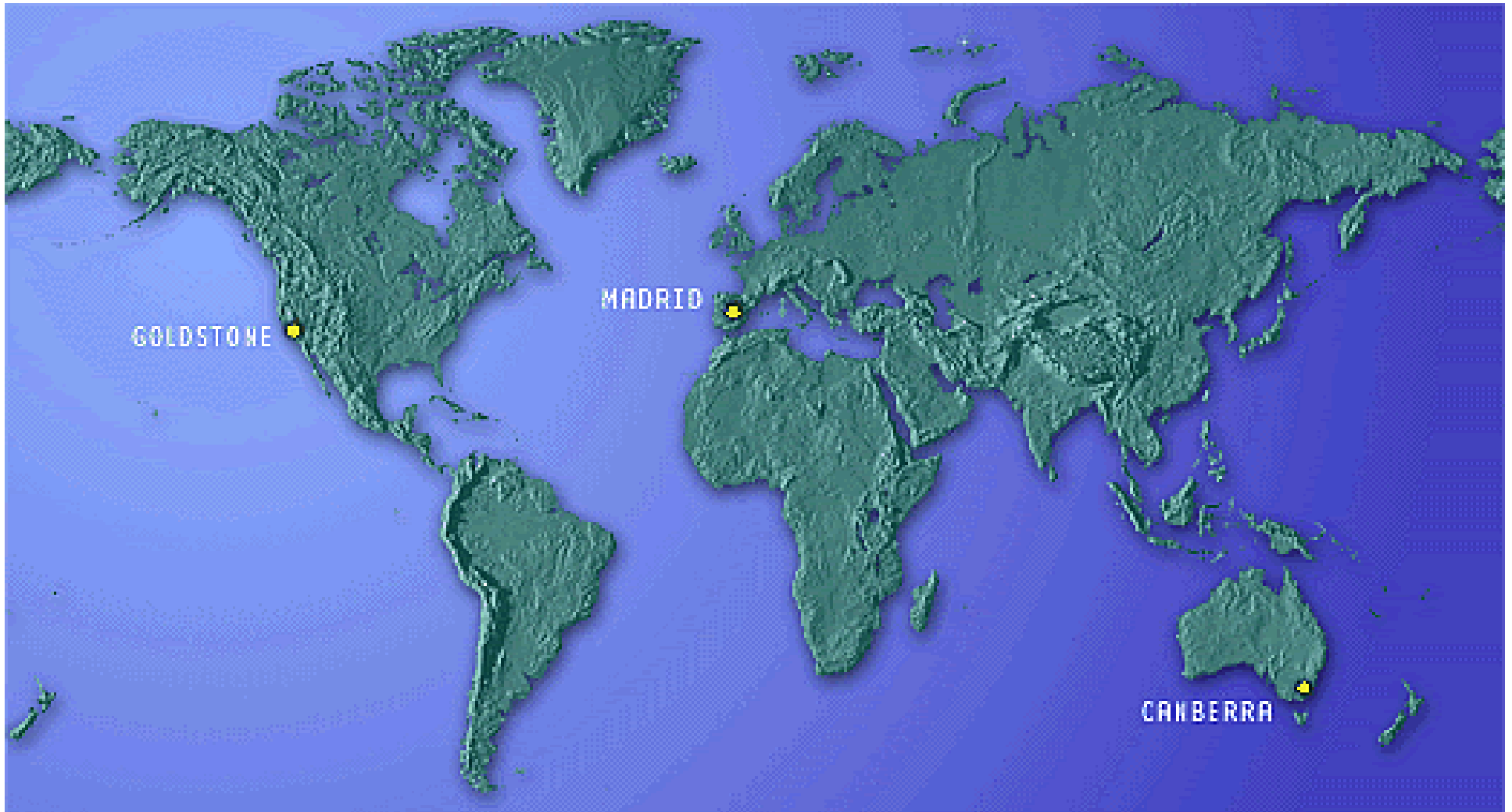


DSN Antenna Downtime Status and Forecast



<http://rapweb.jpl.nasa.gov/planning>

Antenna Downtime Status and Forecast

The following downtimes were approved for 2008 - 2010

- ❑ SPC-60 downtime for Commercial power installation task. The Saturday-Sunday 36 hours in week 12.
 - ❑ The 12-hour blocks on Sunday of week 14 and Monday of week 15 are being proposed to merge to a 32.5 hour block.
 - ❑ The Sunday of week 13 and Monday of week 14 are being proposed to merge to a 36 hour block.
- ❑ DSS-55 downtime for Paint Repair beginning in June 2008 for weeks 23 - 28.
- ❑ DSS-34 downtime for DSS-34 Azimuth Track Replacement in June of 2008 for week 25 - 28
- ❑ DSS-65 downtime for Life Extension Elevation for October, November of 2009 for weeks 45 - 48.
- ❑ DSS-25 downtime for Ka U/L install for April 2010 for weeks 13 - 15.
- ❑ DSS-14 downtime for Life Extension beginning 09/28/2009. It was requested by the MESSENGER mission to delay the start of the downtime by up to ten days to support Mercury flyby and post flyby support. This was agreed to but the amount of days needed has not yet been determined but is ten days or less.
- ❑ Approved DSS-14 Grouting for week 25 has been requested to move due to other requirements in that week.
- ❑ MDSCC 26m antenna, DSS-66 will close at the end of FY08 as currently shown. CDSCC 26m antenna, DSS-46 will close as of August 1, 2009.

Antenna Downtime Status and Forecast

Downtime request for 2008

The following proposals for 14 hour complex downtimes are requested by GDSCC.

- ❑ Corrective maintenance “Apollo Tie-Line CB 22 Electrical Maintenance” in April.
- ❑ Corrective maintenance “G86/G81 Transfer Switch Electrical Maintenance” in May.
- ❑ Preventative maintenance “G91 2400V Switchgear Electrical Maintenance” in June.
- ❑ Preventative maintenance “Echo Tie-Line Electrical Maintenance” in September.
- ❑ Preventative maintenance “Apollo Tie-Line Electrical Maintenance” in October.
- ❑ Preventative maintenance “SPC-10 Electrical Maintenance” in November.

The following proposals for antenna downtimes are requested.

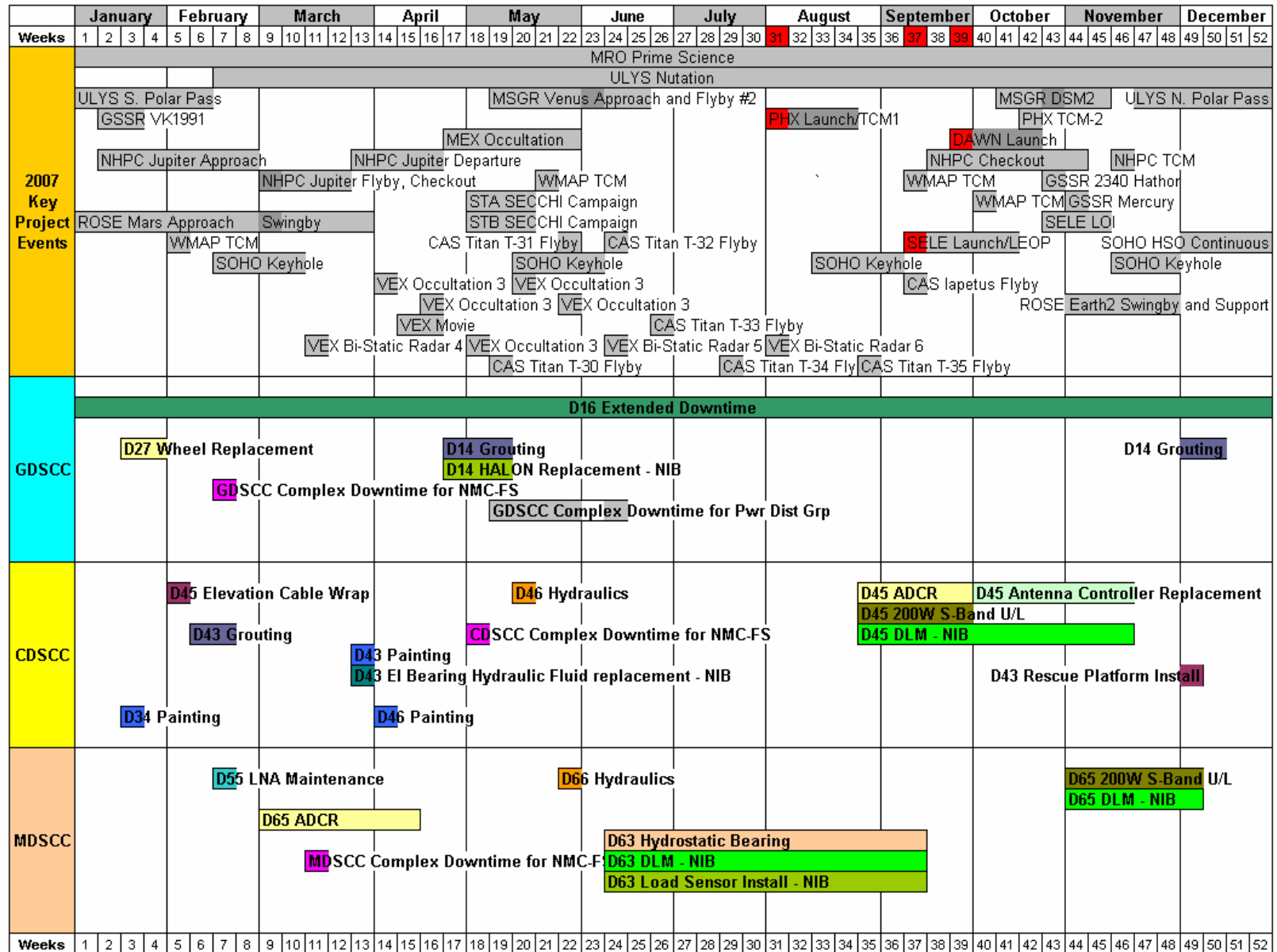
- ❑ CDSCC Annual Antenna Inspections including Annual Servo Testing at DSS-43, -45 and -34 in weeks 3 & 4 of 2008 not to be scheduled concurrently.
- ❑ GDSCC Annual Antenna Inspections including Annual Servo Testing at DSS-14, -15, -24, -25, and -26 in weeks 15 & 16 of 2008 not to be scheduled concurrently.
- ❑ MDSCC Annual Antenna Inspections including Annual Servo Testing at DSS-63, -65, -54 and -55 in weeks 23 & 24 of 2008 not to be scheduled concurrently.
- ❑ HEF Transmitter Manifold Installation at DSS-15, -45 and -65 between July, 2008 and June 2009 not to be scheduled concurrently with DSS-15 being scheduled first.

Antenna Downtime Status and Forecast

Changes to 2007 Downtime Schedule

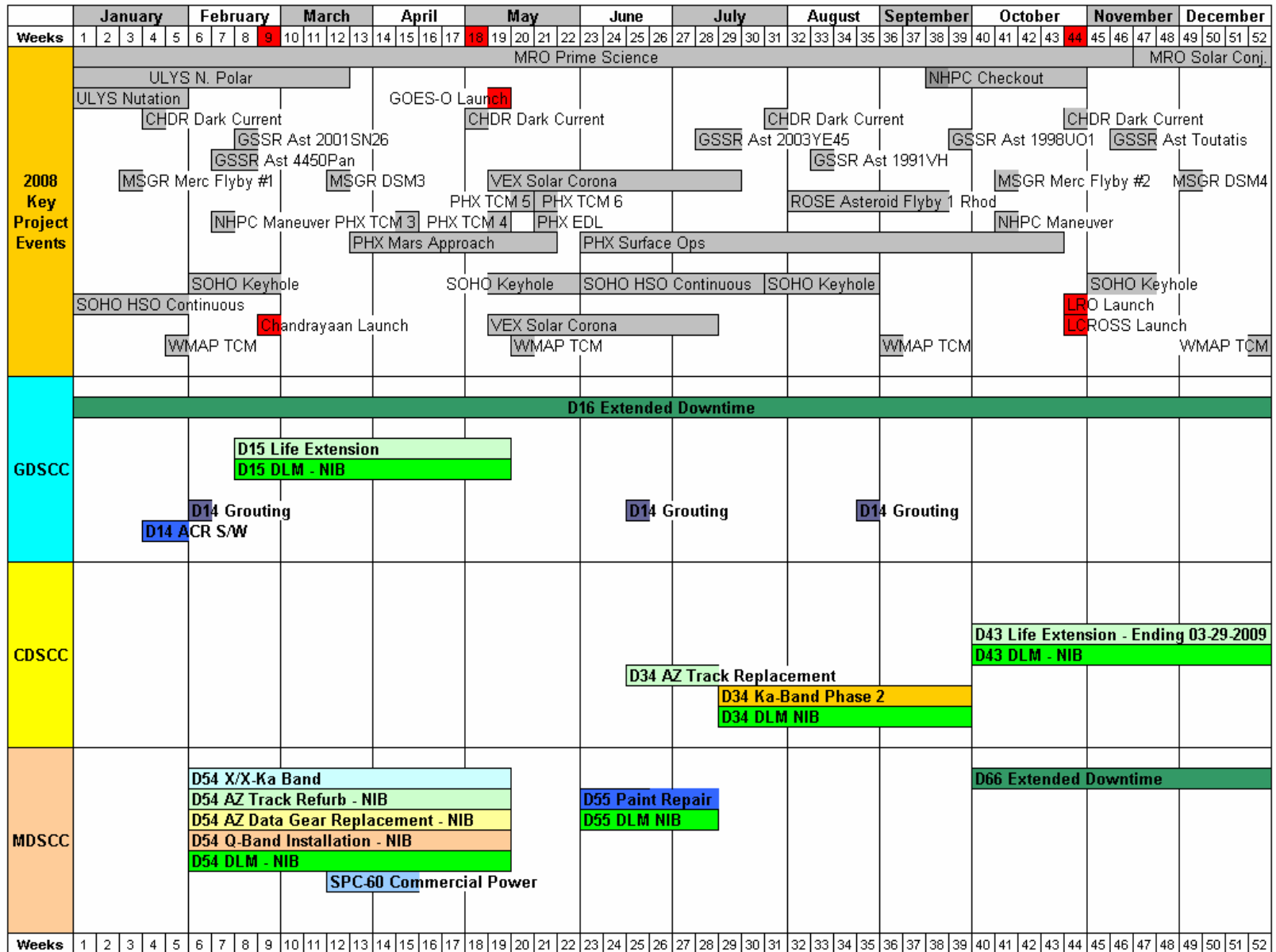
- ❑ 13-hour complex-wide downtime for SPC-10 Electrical Maintenance is scheduled for DOY 341/2115 – 342/1015.
- ❑ 2-hour daytime complex-wide downtime per complex every month for Ground Network Maintenance are scheduled:
 - ❑ SPC-40 week 44 302/2315-303/0115
 - ❑ SPC-10 week 44 304/2015-2215
 - ❑ SPC-60 week 45 312/0700-0900
- ❑ 2-hour daytime complex-wide downtime per complex every month for Network Infrastructure are scheduled in week 46:
 - ❑ SPC-10 316/0000-0200
 - ❑ SPC-40 316/1210-1410
 - ❑ SPC-60 316/0730-0930
- ❑ Downtime for DSS-43 for Rescue Platform Install is scheduled for DOY 336/2100 – 339/2100.
- ❑ ACR S/W install is in the schedule for DOY 25/0000 – DOY 34/0000.
- ❑ Downtime for Grouting is scheduled for DOY 340/1600 – DOY 346/0000.

Antenna Downtime Status and Forecast 2007



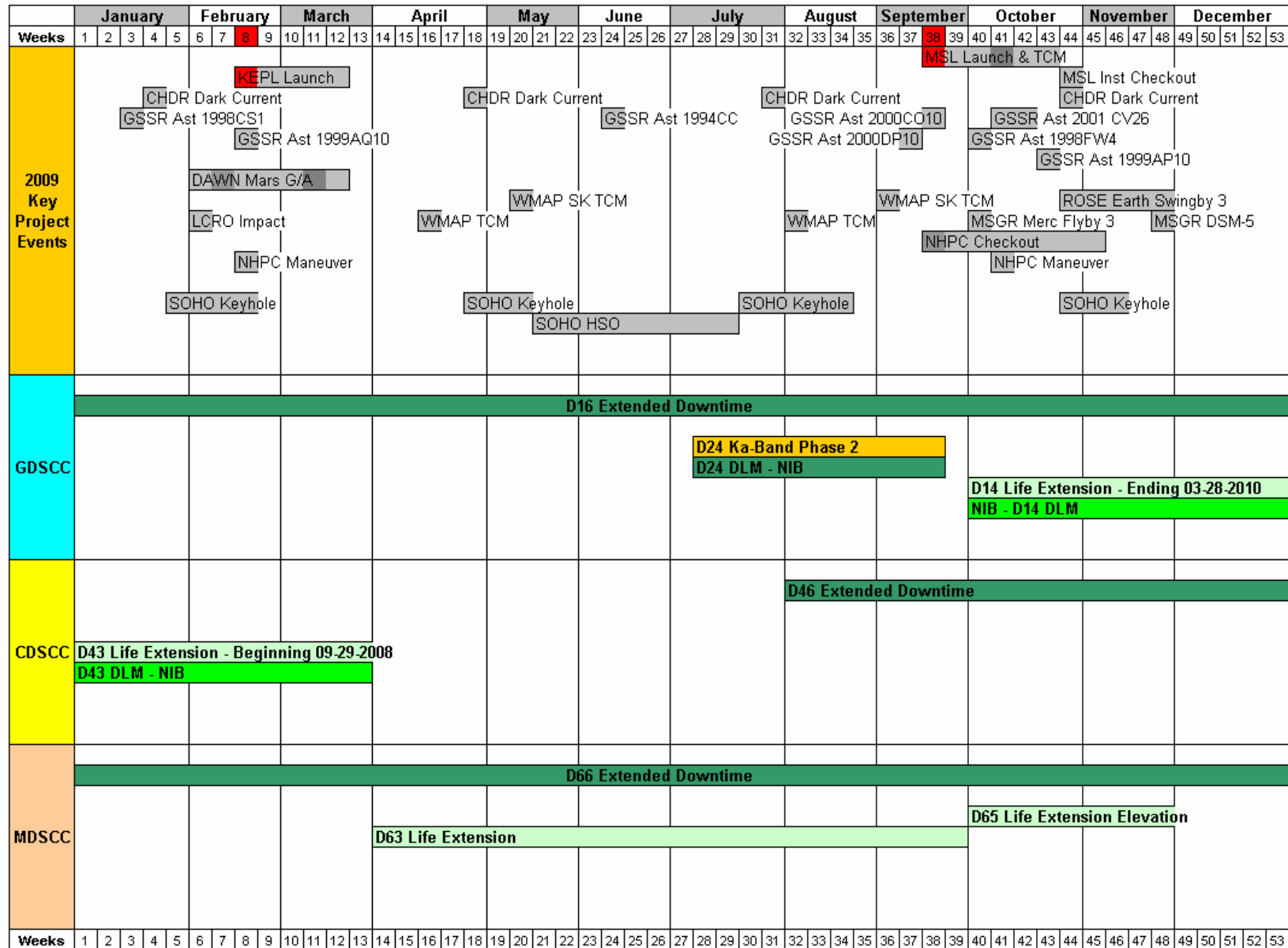
Revised: November 14, 2007

Antenna Downtime Status and Forecast 2008



Revised: November 14, 2007

Antenna Downtime Status and Forecast 2009



Revised: November 14, 2007

Antenna Downtime Status and Forecast 2010

	January				February				March				April				May				June				July				August				September				October				November				December																			
Weeks	1	2	3	4	5	6	7	8	9	10	11	12	13	14	15	16	17	18	19	20	21	22	23	24	25	26	27	28	29	30	31	32	33	34	35	36	37	38	39	40	41	42	43	44	45	46	47	48	49	50	51	52												
2010 Key Project Events	CAS Tour																																GSSR Mars				CHDR Dark Current				GSSR Mercury				GSSR Ast 1999 MN				CHDR Dark Current				GSSR Ast 2003 UV11				GSSR Mercury							
	EGS Global VLBI				EGS EVN J-M5				KEPL Qtrly. Roll				GSSR Mercury				EGS Global VLBI				EGS EVN J-M5				GSSR Ast 2002 VE68				EGS Global VLBI				EGS EVN J-M5																															
	MRO Relay																																MRO MSL Support																															
	M010 THEMIS																																																															
	MRO X/Ka DDOR				MRO X/Ka DDOR				MRO X/Ka DDOR				MSL Approach				MSL Surface Ops																																															
	SOHO Keyhole				SOHO Keyhole				MSL TCM				MSL TCM				MSL EDL				NHPC TCM				NHPC DDOR				NHPC TCM																																			
	Wind TCM				Wind TCM				ROSE Asteroid Flyby				Wind TCM				NHPC Checkout				Wind TCM				ROSE DSM-2																																							
	D16 Extended Downtime																																																															
	GDSCC	D14 Life Extension - Beginning 09-28-2009																																																														
		NIB - D14 DLM																																																														
CDSCC	D25 Ka U/L																																D25 Ka U/L - Proposed Extension																															
	NIB - D25 DLM																																NIB - D25 DLM - Proposed Extension																															
MDSCC	D46 Extended Downtime																																																															
	D66 Extended Downtime																																D54 Ka-Band Phase 2																															

Revised: November 15, 2007

Antenna Downtime Status and Forecast

DSN Resource Implementation Planning Matrix By Subnet

Complex	Station	Subnet	S-Band		X-Band		Ka-Band		Ka Phase 2
			Down	Up	Down	Up	Down	Up	
10	DSS-16	26M	✓	✓	N/A	N/A	N/A	N/A	N/A
40	DSS-46	26M	✓	✓	N/A	N/A	N/A	N/A	N/A
60	DSS-66	26M	✓	✓	N/A	N/A	N/A	N/A	N/A
10	DSS-27	34HSB	✓	✓	N/A	N/A	N/A	N/A	N/A
10	DSS-24	34B1	✓	✓	✓	✓	N/A	N/A	09/21/09
40	DSS-34	34B1	✓	✓	✓	✓	✓	N/A	09/29/08
60	DSS-54	34B1	✓	✓	✓	✓	04/15/08	N/A	09/27/10
10	DSS-25	34B2	N/A	N/A	✓	✓	✓	08/01/10	N/A
10	DSS-26	34B2	N/A	N/A	✓	✓	✓	N/A	N/A
60	DSS-55	34B2	N/A	N/A	✓	✓	✓	N/A	N/A
10	DSS-15	34HEF	✓	N/A	✓	✓	N/A	N/A	N/A
40	DSS-45	34HEF	✓	11/18/07	✓	✓	N/A	N/A	N/A
60	DSS-65	34HEF	✓	12/10/07	✓	✓	N/A	N/A	N/A
10	DSS-14	70M	✓	✓	✓	✓	N/A	N/A	N/A
40	DSS-43	70M	✓	✓	✓	✓	N/A	N/A	N/A
60	DSS-63	70M	✓	✓	✓	✓	N/A	N/A	N/A

N/A = Capability Not Planned xx/xx/xx = Capability Date Recently Changed As of: 08/16/07
 ✓✓✓ = Capability Recently Exists ✓ = Capability Exists