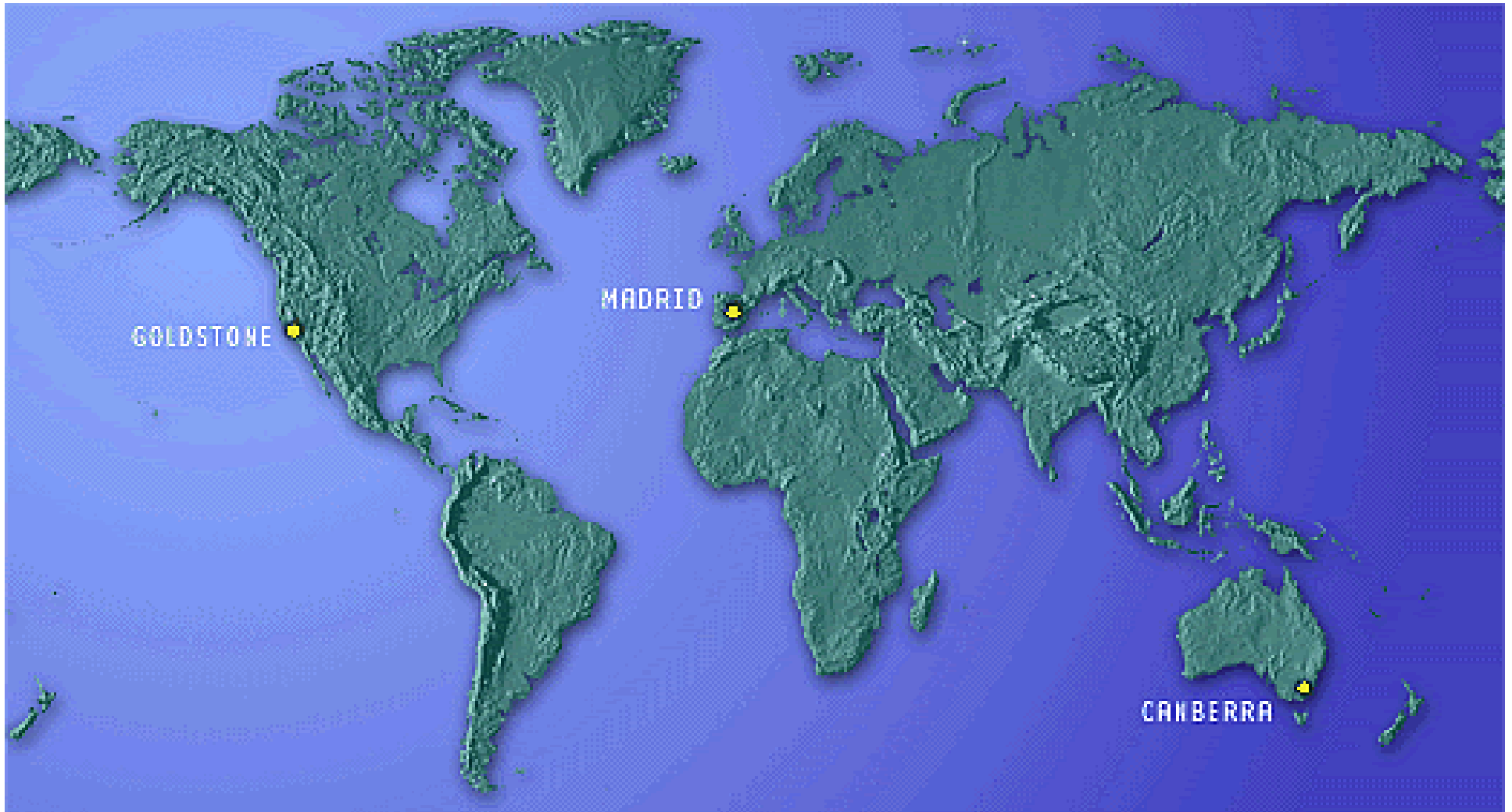


# DSN Antenna Downtime Status and Forecast



<http://rapweb.jpl.nasa.gov/planning>

# Antenna Downtime Status and Forecast

## Changes to 2007 Downtime Schedule

- ❑ Twelve hour DSS-14/15 downtime for Electrical Maintenance on G81/G86 Substation at the Mars site is scheduled for August 23
  - ❑ 08/23/2007 15:00 – 08/24/2007 03:00
- ❑ Fourteen hour complex downtime for Overload task proposed for September time frame
- ❑ Two hour daytime complex-wide downtime per complex every month for Ground Network Maintenance
- ❑ Two hour daytime network-wide downtime twice per year for Ground Network Maintenance
- ❑ Proposal for 34 downtime hours for DSS-43 for Rescue Platform Install on DOY 340-342.
- ❑ Previously approved DSS-14 ACR S/W Install and Regrout have been cancelled. Will be looking for time in December 2007/January 2008

# Antenna Downtime Status and Forecast

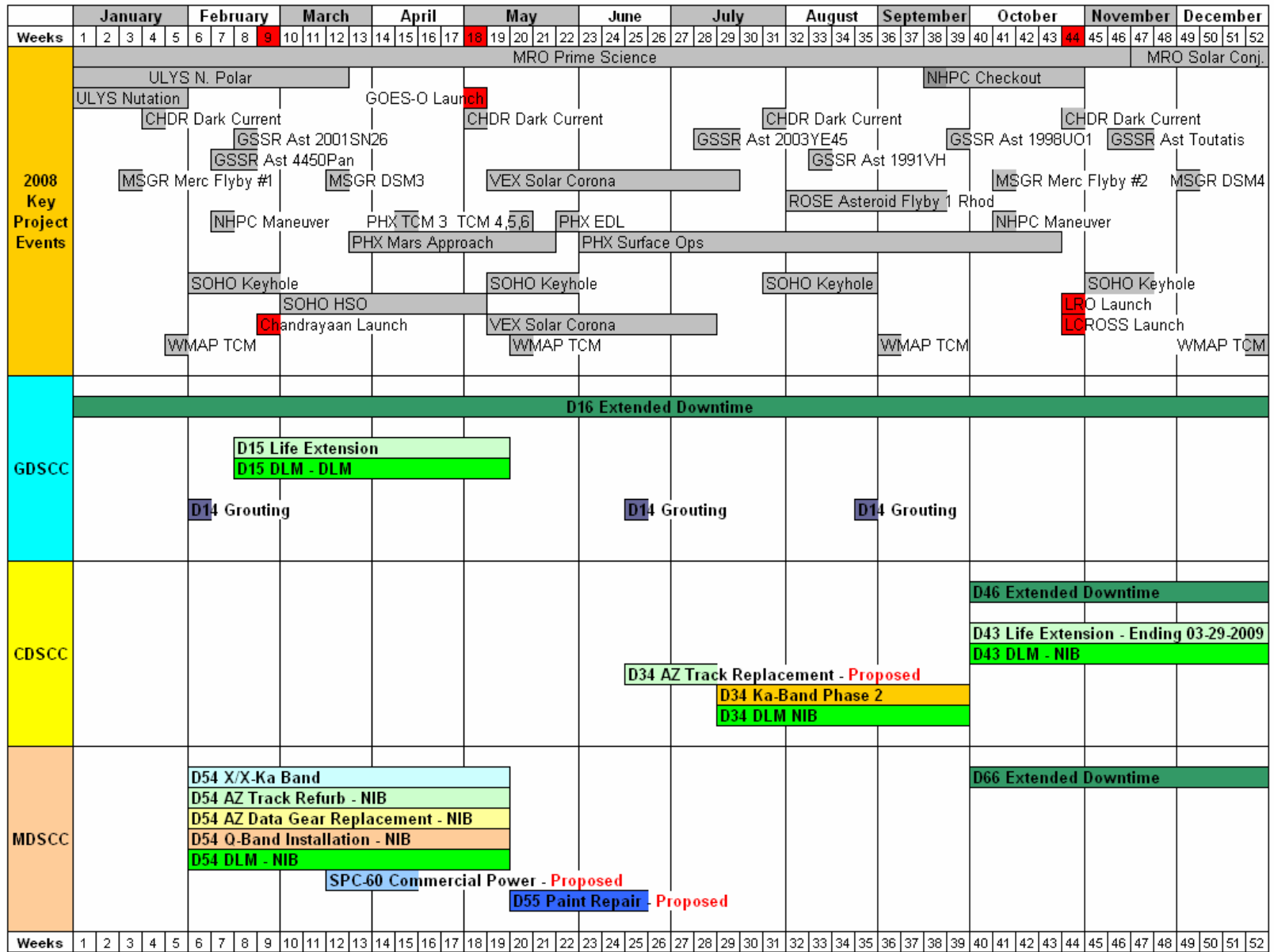
## Changes to 2008 Downtime Schedule

- ❑ There are proposed changes to the 2008 Commercial power installation task. Currently the task is proposed to occur in two 12 hour blocks on Monday and Tuesday, March - April 2008. It is being analyzed to occur in one 36 hour block on Saturday and Sunday

All previous downtime proposals have been agreed to by all DSN Missions/Users through the INCF/RAR, JURAP or Mid-Range Scheduling Process



# Antenna Downtime Status and Forecast 2008



Revised: July 18, 2007



# Antenna Downtime Status and Forecast 2010

	January				February				March				April				May				June				July				August				September				October				November				December											
Weeks	1	2	3	4	5	6	7	8	9	10	11	12	13	14	15	16	17	18	19	20	21	22	23	24	25	26	27	28	29	30	31	32	33	34	35	36	37	38	39	40	41	42	43	44	45	46	47	48	49	50	51	52				
2010 Key Project Events	CAS Tour																												GSSR Ast 1998U01				GSSR Mercury																							
	GSSR Mars				EGS Global VLBI				CHDR Dark Current				GSSR Mercury				GSSR Ast 1999 MN				EGS Global VLBI				CHDR Dark Current				GSSR Ast 2003 UV11				GSSR Ast 2002 VE68																							
					EGS EVN J-M5				KEPL Qtrly. Roll								EGS EVN J-M5				KEPL Qtrly. Roll								EGS EVN J-M5				KEPL Qtrly. Roll																							
	MRO Relay																												MRO MSL Support																											
	M010 THEMIS																																																							
	MRO X/Ka DDOR				MRO X/Ka DDOR				MRO X/Ka DDOR				MSL Approach				MSL Surface Ops																																							
	SOHO Keyhole								SOHO Keyh				MSL TCM				MSL TCM				MSL EDL				NHPC TCM				NHPC DDOR				NHPC TCM																							
	Wind TCM								Wind TCM								ROSE Asteroid Flyby				Wind TCM				NHPC Checkout				Wind TCM				ROSE DSM-2																							
	GDSCC	D14 Life Extension - Beginning 09-28-2009																																																						
NIB - D14 DLM												D25 Ka U/L - Proposed																																												
CDSCC																																																								
MDSCC																																																								
	D54 Ka-Band Phase 2																												D54 DLM																											
Weeks	1	2	3	4	5	6	7	8	9	10	11	12	13	14	15	16	17	18	19	20	21	22	23	24	25	26	27	28	29	30	31	32	33	34	35	36	37	38	39	40	41	42	43	44	45	46	47	48	49	50	51	52				

Revised: April 2, 2007

# Antenna Downtime Status and Forecast

## DSN Resource Implementation Planning Matrix By Subnet

Complex	Station	Subnet	S-Band		X-Band		Ka-Band		Ka Phase 2
			Down	Up	Down	Up	Down	Up	
10	DSS-16	26M	✓	✓	N/A	N/A	N/A	N/A	N/A
40	DSS-46	26M	✓	✓	N/A	N/A	N/A	N/A	N/A
60	DSS-66	26M	✓	✓	N/A	N/A	N/A	N/A	N/A
10	DSS-27	34HSB	✓	✓	N/A	N/A	N/A	N/A	N/A
10	DSS-24	34B1	✓	✓	✓	✓	N/A	N/A	09/21/09
40	DSS-34	34B1	✓	✓	✓	✓	✓	N/A	09/29/08
60	DSS-54	34B1	✓	✓	✓	✓	04/15/08	N/A	09/27/10
10	DSS-25	34B2	N/A	N/A	✓	✓	✓	08/01/10	N/A
10	DSS-26	34B2	N/A	N/A	✓	✓	✓	N/A	N/A
60	DSS-55	34B2	N/A	N/A	✓	✓	✓	N/A	N/A
10	DSS-15	34HEF	✓	N/A	✓	✓	N/A	N/A	N/A
40	DSS-45	34HEF	✓	12/10/07	✓	✓	N/A	N/A	N/A
60	DSS-65	34HEF	✓	12/10/07	✓	✓	N/A	N/A	N/A
10	DSS-14	70M	✓	✓	✓	✓	N/A	N/A	N/A
40	DSS-43	70M	✓	✓	✓	✓	N/A	N/A	N/A
60	DSS-63	70M	✓	✓	✓	✓	N/A	N/A	N/A

N/A = Capability Not Planned    xx/xx/xx = Capability Date Recently Changed    As of: 07/03/07  
 ✓✓✓ = Capability Recently Exists    ✓ = Capability Exists