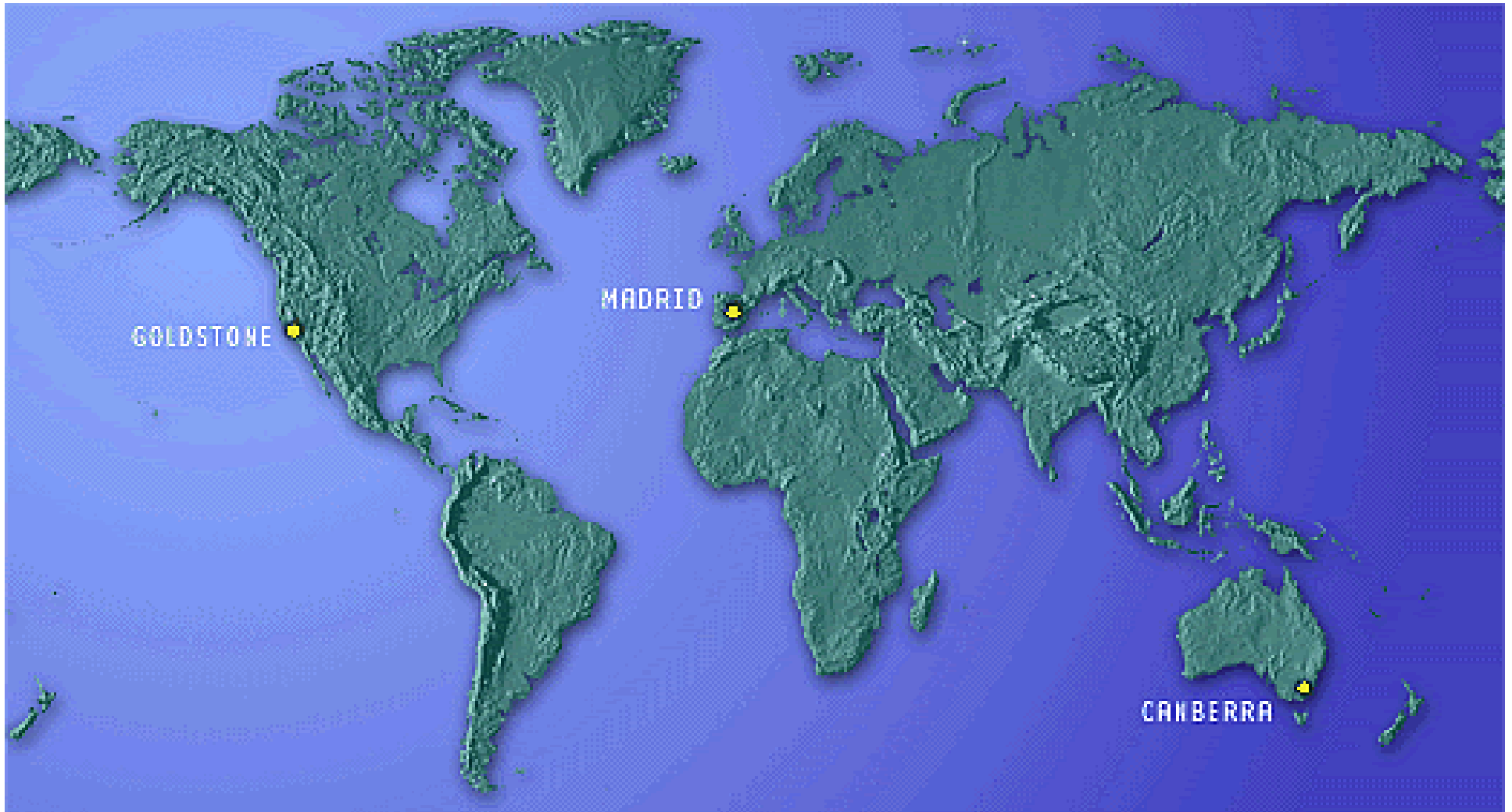


DSN Antenna Downtime Status and Forecast



<http://rapweb.jpl.nasa.gov/planning>

Antenna Downtime Status and Forecast

Changes to 2006 Downtime Schedule

- ❑ DSS-15 ADCR may be moved depending on the STA/B Launch date between Oct 19 - 26
- ❑ DSS-45 Antenna Controller and DLM-NIB will be moved to a later date depending on STA/B Launch date

Changes to 2007 Downtime Schedule

- ❑ DSS-45 Antenna Controller and DLM-NIB possibly moved to late 2007 and added to the ADCR task and extended, depending on the actual STA/B launch date

Changes to 2008 Downtime Schedule

- ❑ There are no outstanding downtime requests for 2008

Changes to 2009 Downtime Schedule

- ❑ There are no outstanding downtime requests for 2009

All previous downtime proposals have been agreed to by all DSN Missions/Users through the INCF/RAR, JURAP or Mid-Range Scheduling Process

Antenna Downtime Status and Forecast

DSN Antenna Downtime Report

Revised: September 1, 2006

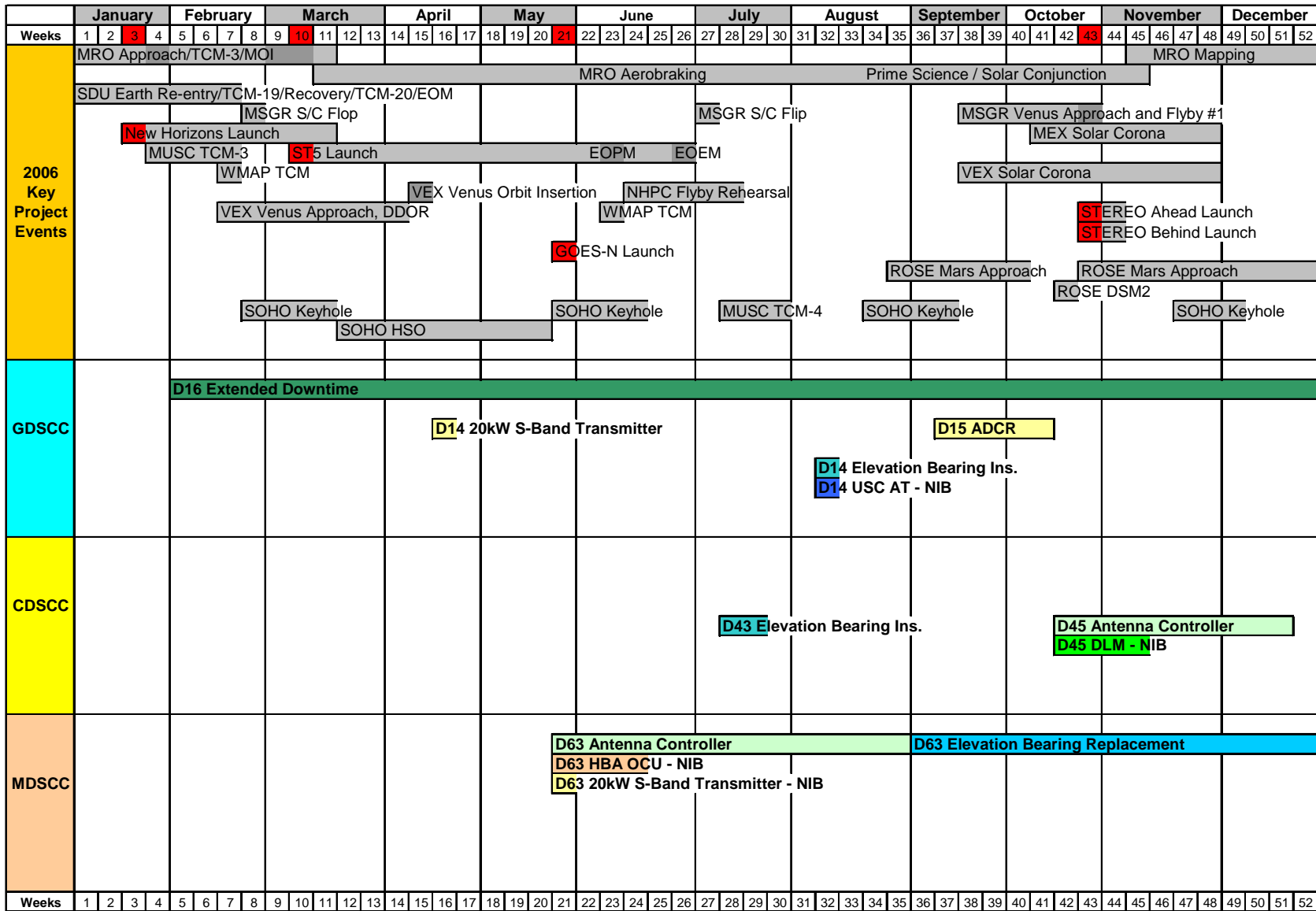
2006							
Site	Description	Start	End	Duration (Days)	Weeks	Start DOY	End DOY
DSS 16	Extended Downtime	01/30/2006 16:00	12/31/2009 23:59	1432	05 - 53	030	365
DSS 63	Antenna Controller Replacement	05/22/2006 00:00	12/31/2006 23:59	223	21 - 52	142	365
DSS 15	USC Acceptance Testing - NIB	09/04/2006 16:00	09/05/2006 16:00	1	36 - 36	247	247
DSS 15	Antenna Drive Cabinet Refurbishment	09/18/2006 00:00	10/12/2006 23:59	35	38 - 42	261	295
DSS 26	USC Acceptance Testing	10/14/2006 00:00	10/15/2006 23:59	2	41 - 41	287	288
DSS 45	Antenna Controller Replacement	10/18/2006 00:00	12/17/2006 23:59	63	41 - 50	291	351
DSS 14	USC Acceptance Testing	10/19/2006 00:00	10/21/2006 23:59	3	42 - 42	292	294

2007							
Site	Description	Start	End	Duration (Days)	Weeks	Start DOY	End DOY
DSS 43	RegROUT and Painting	02/01/2007 00:00	02/11/2007 23:59	10	05 - 06	032	041
DSS 43	20 kW S-Band Transmitter - NIB	02/01/2007 00:00	02/04/2007 23:59	4	05 - 05	032	035
DSS 65	Antenna Drive Cabinet Refurbishment	02/26/2007 00:00	04/29/2007 23:59	63	09 - 17	057	119
DSS 65	S-Band 200W U/L Install - NIB	02/26/2007 00:00	04/29/2007 23:59	63	09 - 17	057	119
DSS 65	DLM - NIB	04/02/2007 00:00	04/29/2007 23:59	28	14 - 17	092	119
DSS 66	Hydraulics Task	04/30/2007 00:00	05/08/2007 23:59	9	18 - 19	120	128
DSS 63	Hydrostatic Bearing Replacement	06/12/2007 00:00	09/16/2007 23:59	97	24 - 37	163	259
DSS 63	DLM - NIB	06/12/2007 00:00	07/08/2007 23:59	27	24 - 27	163	189
DSS 45	DLM - NIB	06/12/2007 00:00	07/08/2007 23:59	27	24 - 27	163	189
DSS 46	Hydraulics Task	07/02/2007 00:00	07/10/2007 23:59	9	27 - 28	183	191
DSS 45	Antenna Drive Cabinet Refurbishment	08/27/2007 00:00	09/30/2007 23:59	35	35 - 39	239	273
DSS 45	S-Band 200W U/L Install - NIB	08/27/2007 00:00	09/30/2007 23:59	35	35 - 39	239	273

2008							
Site	Description	Start	End	Duration (Days)	Weeks	Start DOY	End DOY
DSS 54	X/X-Ka Band Install	02/18/2008 00:00	04/13/2008 23:59	56	08 - 15	049	104
DSS 54	NIB - AZ Track Refurbishment	02/18/2008 00:00	04/13/2008 23:59	56	08 - 15	049	104
DSS 54	NIB - AZ Data Gear Replacement	02/18/2008 00:00	04/13/2008 23:59	56	08 - 15	049	104
DSS 54	NIB - Q-Band Installation	02/18/2008 00:00	04/13/2008 23:59	56	08 - 15	049	104
DSS 15	Life Extension	03/03/2008 00:00	05/11/2008 23:59	70	10 - 19	063	132
DSS 43	Life Extension	09/29/2008 00:00	03/29/2009 23:59	182	40 - 13	273	088

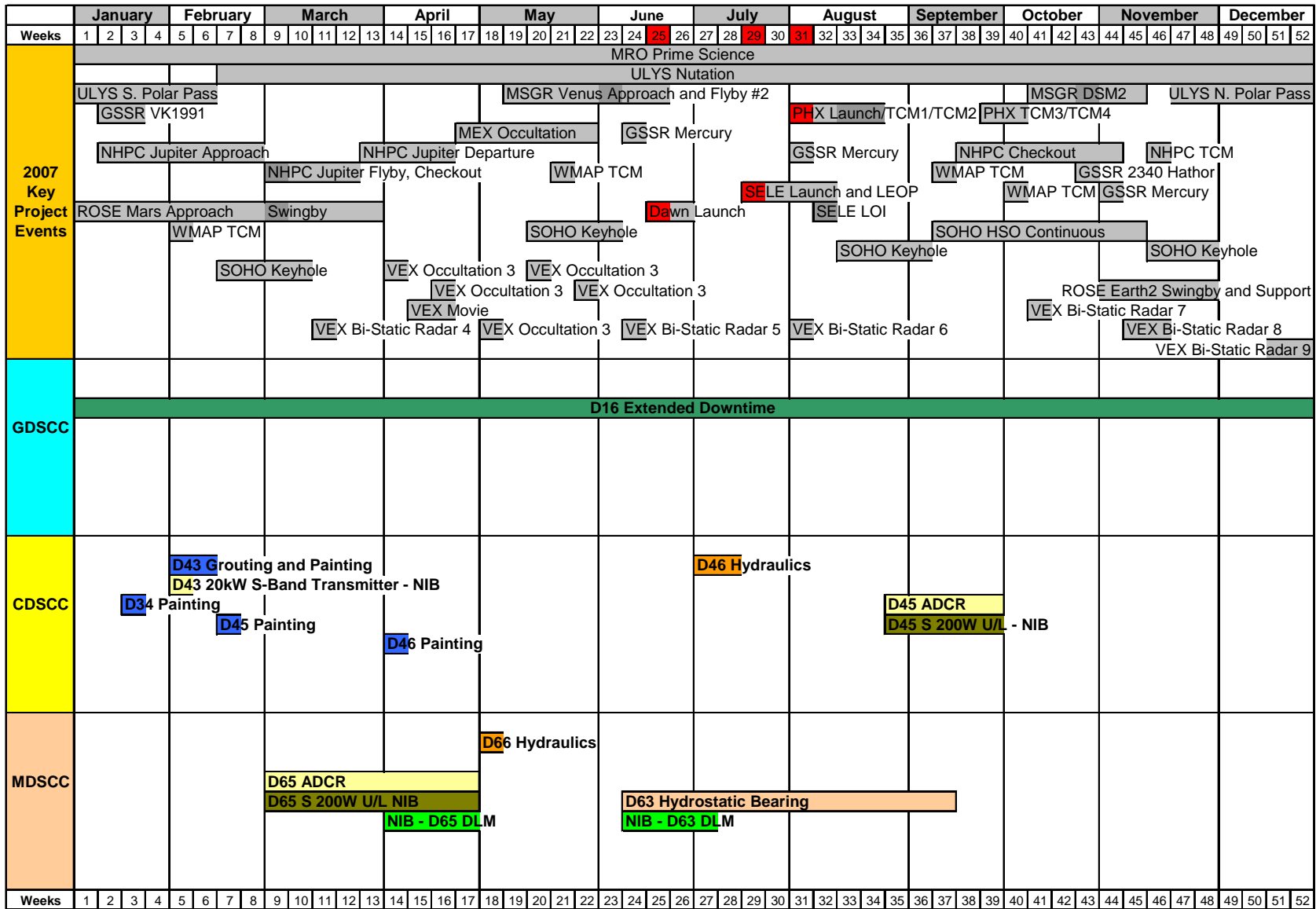
2009							
Site	Description	Start	End	Duration (Days)	Weeks	Start DOY	End DOY
DSS 63	Life Extension	03/30/2009 00:00	09/27/2009 23:59	182	14 - 39	089	270
DSS 14	Life Extension	09/28/2009 00:00	03/28/2010 23:59	182	40 - 12	271	087

Antenna Downtime Status and Forecast 2006



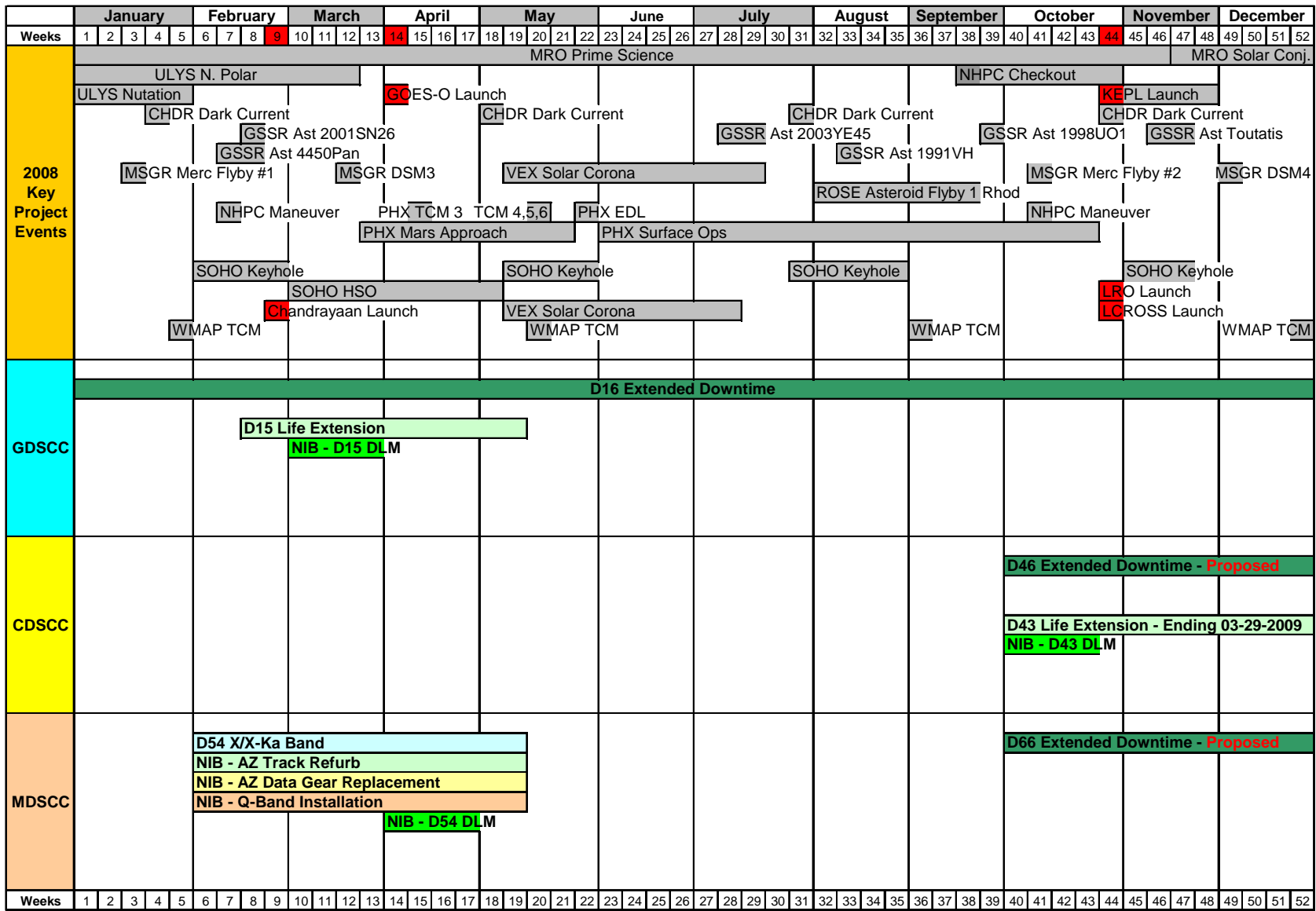
Revised: September 18, 2006

Antenna Downtime Status and Forecast 2007



Revised: September 18, 2006

Antenna Downtime Status and Forecast 2008



Revised: September 26, 2006

Antenna Downtime Status and Forecast

DSN Resource Implementation Planning Matrix By Complex

Complex	Station	Subnet	S-Band		X-Band		Ka-Band		NSP/ TT&C
			Down	Up	Down	Up	Down	Up	
10	DSS-14	70M	✓	✓	✓	✓	N/A	N/A	✓
10	DSS-15	34HEF	✓	N/A	✓	✓	N/A	N/A	✓
10	DSS-16	26M	✓	✓	N/A	N/A	N/A	N/A	N/A
10	DSS-24	34B1	✓	✓	✓	✓	N/A	N/A	✓
10	DSS-25	34B2	N/A	N/A	✓	✓	✓	N/A	✓
10	DSS-26	34B2	N/A	N/A	✓	✓	✓	N/A	✓
10	DSS-27	34HSB	✓	✓	N/A	N/A	N/A	N/A	✓ ✓ ✓
40	DSS-34	34B1	✓	✓	✓	✓	✓ ✓ ✓	N/A	✓
40	DSS-43	70M	✓	✓	✓	✓	N/A	N/A	✓
40	DSS-45	34HEF	✓	10/01/07	✓	✓	N/A	N/A	✓
40	DSS-46	26M	✓	✓	N/A	N/A	N/A	N/A	N/A
60	DSS-54	34B1	✓	✓	✓	✓	04/15/08	N/A	✓
60	DSS-55	34B2	N/A	N/A	✓	✓	✓ ✓ ✓	N/A	✓
60	DSS-63	70M	✓	✓	✓	✓	N/A	N/A	✓
60	DSS-65	34HEF	✓	10/01/07	✓	✓	N/A	N/A	✓
60	DSS-66	26M	✓	✓	N/A	N/A	N/A	N/A	N/A
N/A = Capability Not Planned			xx/xx/xx = Capability Date Recently Changed			As of: 08/01/06			
✓ ✓ ✓ = Capability Recently Exists			✓ = Capability Exists						